

0CNP3-M90300EN

Directions for the Parts Catalog.

1. The parts stipulated in this Parts Catalog are not necessarily standard equipped parts.
2. Parts may change without prior notice.
3. The following is an example of the Parts Catalog format.

REF.	LEV.	PARTS NO.	DESCRIPTION	Q'TY						I	R
				(A)	(B)	(C)	(D)	(E)	(F)		
1	1	729595-51390	FUEL INJECTION PUMP	1	1	1	1	1			1
1-1	1	729595-51391	FUEL INJECTION PUMP	1	1	1	1	1		N	1
		(A=E00185) (B=E00200)									
3	2	26022-060162	SCREW M 6X 16	9	9	9	9	9			
3-1	2	26022-060162	SCREW M 6X 16	4	4	4	4	4		K	
		(A=E00156) (B=E00156) (C=E00156) (D=E00156) (E=E00156)									
4	2	129470-51040	CAMSHAFT	1	1	1	1	1			
5	2	122710-51050	BEARING, ROLLER	2	2	2	2	2			
6	2	129470-51060	RETAINER	1	1	1	1	1			

Remarks
(1) BOOST COMPEMSATOR TYPE. OPTIONAL PART, TO E00155,(4JH-DT, 4JH-DTZ

① Ref. No.

The Ref. No. listed may not be in accordance with the illustration Ref. No.

(Ex.) Illustration No.

List Ref No.

1

1

(Before change)

1-1

(After change)

For interchangeable symbols N, R and K, illustrations for new parts may be abbreviated.

② Lev. (Level)

Level indication

The numbers below indicate the level of relativity towards the main part.

1 ----- Main parts (Assembly parts)

2 ----- Sub component included in " 1 ".

3 ----- Sub component included in " 2 ".

Note) Parts that are not for sale are partially illustrated but not listed.

③ Interchangeability Mark

When a part change takes place, one of the following interchangeability symbols is indicated beside the part.

Symbol	Interchangeability	Contents note
N	Old $\begin{matrix} \leftarrow \text{Yes} \\ \text{No} \rightarrow \end{matrix}$ New	New Part is interchangeable for Old Part but Old Part is not interchangeable for New Part.
Q	Old $\begin{matrix} \leftarrow \text{No} \\ \text{Yes} \rightarrow \end{matrix}$ New	New Part is not interchangeable for Old Part but Old Part is interchangeable for New Part.
R	Old $\begin{matrix} \leftarrow \text{Yes} \\ \text{Yes} \rightarrow \end{matrix}$ New	New/ Old Parts are both interchangeable.
S	Old $\begin{matrix} \leftarrow \text{No} \\ \text{No} \rightarrow \end{matrix}$ New	New/ Old Parts are both not interchangeable.
W		Part newly added.
Z		Part discontinued.
F		Not interchangeable by a single part but interchangeable together with related parts.
K		Changes only for used parts quantities.

④ Effective Machine No.

When a part changes, the effective Machine No. will be indicated in the (A)-(F) column.

Product Symbol	Product No.	Product Symbol	Product No.
C	Clutch No. Compressor No.	F	Machine No. (Agricultural Equip.)
D	Drive No.	M	Machine No.
E	Engine No.	Note 1)	Date

Note 1) A date may follow the symbol. (Ex.) 1996.01

Note 2) " XXX " are for parts that could not be predicted or for engine models that could not be identified.

Note 3) (A=E00185) is the E (Engine Serial Number) for the column (A) model (in this case 4JH-DT) after the parts design change.

⑤ Remarks Mark

Figures or alphabets (symbols) are entered in the remarks column.

The comments (remarks) on parts that are indicated at the bottom of the illustration are the same symbols as those stated above.

Contents

Fig. No. Fig. Name

ENGINE UNIT(GA210)

1. CYLINDER BLOCK
2. CYLINDER HEAD & BONNET
3. TOOL & LABEL
4. AIR CLEANER & MUFFLER
5. CRANKSHAFT,PISTON & CAMSHAFT
6. FUEL OIL TANK & FUEL OIL LINE
7. CARBURETOR
8. GOVERNOR & CONTROL DEVICE
9. FLY MAGNET & STARTING DEVICE
10. STARTING MOTOR

ENGINE RELATED SECTION

11. ENGINE RELATED

DRIVE TRAVEL SECTION

12. TENSION CLUTCH
13. ENGINE PULLEY & BELT

CONTROL SECTION

14. HANDLE
15. CONTROL PANEL
16. DEAD MAN LEVER
17. TRAVEL CLUCH
18. CHANGE LEVER

Fig. No. Fig. Name

19. CHANGE ROD
20. BYPASS LEVER
21. CHUTE LEVER
22. CHUTE HANDLE
23. LIFTING

CHASSIS,COVER & CRAWLER SECTION

24. CHASSIS FRAME
25. BELT & GEAR COVER
26. CRAWLER

ELECTRICAL PARTS SECTION

27. BATTERY
28. HARNESS & SWITCH
29. HARNESS & SWITCH
30. LAMP

SNOW REMOVING SECTION

31. SNOW REMOVING FRAME
32. AUGER COVER
33. CHUTE
34. GEAR CASE
35. AUGER & BLOWER

Contents

Fig. No. Fig. Name

LABELS & ACCESSORIES SECTION

36. LABELS

37. LABELS(SAFETY)

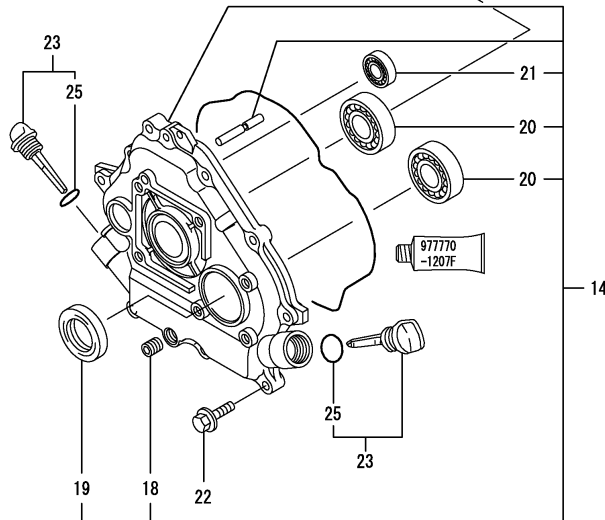
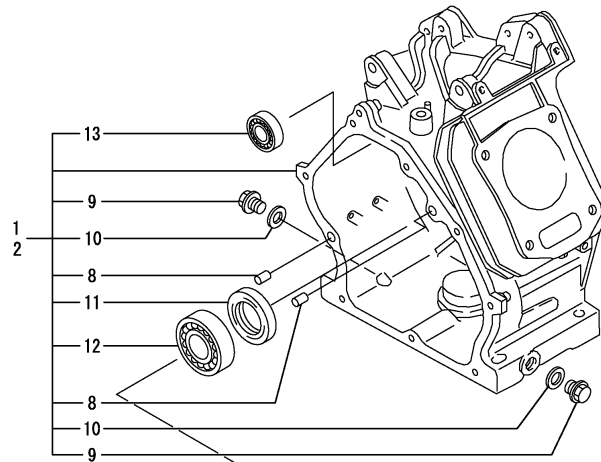
38. TOOLS & ACCESSORIES

TRANSMISSION SECTION

39. TRANSMISSION

Fig. No. Fig. Name

Fig.1. CYLINDER BLOCK



(A)=GA210E-SJ
(B)=GA210E-SEJ
(C)=

(D)=
(E)=
(F)=

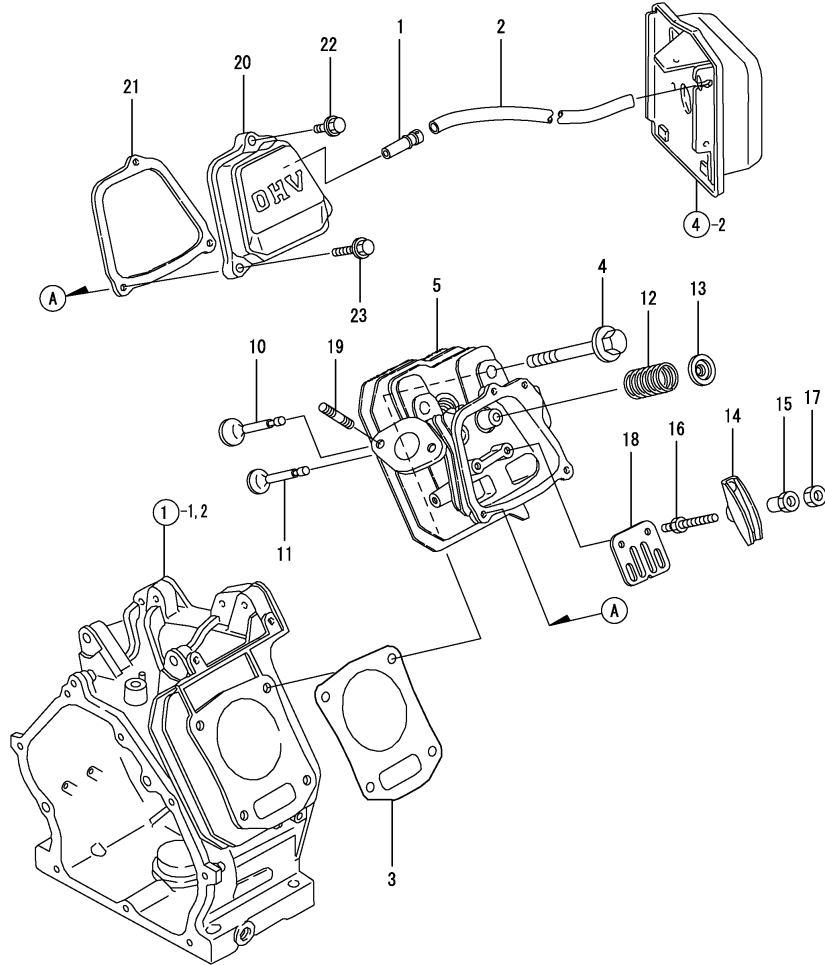
No.	Lev.	Parts No.	Description	Q'ty						I	R
				(A)	(B)	(C)	(D)	(E)	(F)		
1	1	760699-01571	BLOCK ASSY, CYLINDER	1							
2	1	760699-01561	BLOCK ASSY, CYLINDER		1						
8	2	114270-01600	PIN, M8X12	2	2						
9	2	160610-01690	PLUG, M12	2	2						
10	2	104200-59170	GASKET, 12	2	2						
11	2	160690-02220	SEAL, TC25416	1	1						
12	2	24101-062050	BEARING, BALL 6205C3	1	1						
13	2	24101-062004	BEARING, BALL 6200	1	1						
14	1	760699-01502	COVER ASSY	1	1						
18	2	160690-01600	PLUG, M12	1	1						
19	2	160690-02220	SEAL, TC25416	1	1						
20	2	24101-062050	BEARING, BALL 6205C3	2	2						
21	2	24101-062004	BEARING, BALL 6200	1	1						
22	1	26476-060252	SCREW, TAPPING M6X25	8	8						
23	1	114299-01760	CAP ASSY	2	2						
25	2	114299-01950	O-RING, 18	2	2						

Remarks
(REMARKS)"EFFECTIVE MACHINE NO." OF
ENGINE IS INDICATED ON THE
ENGINE LABEL WHICH IS SHOWN
IN FIG.9.

Fig.2. CYLINDER HEAD & BONNET

(A)=GA210E-SJ
 (B)=GA210E-SEJ
 (C)=

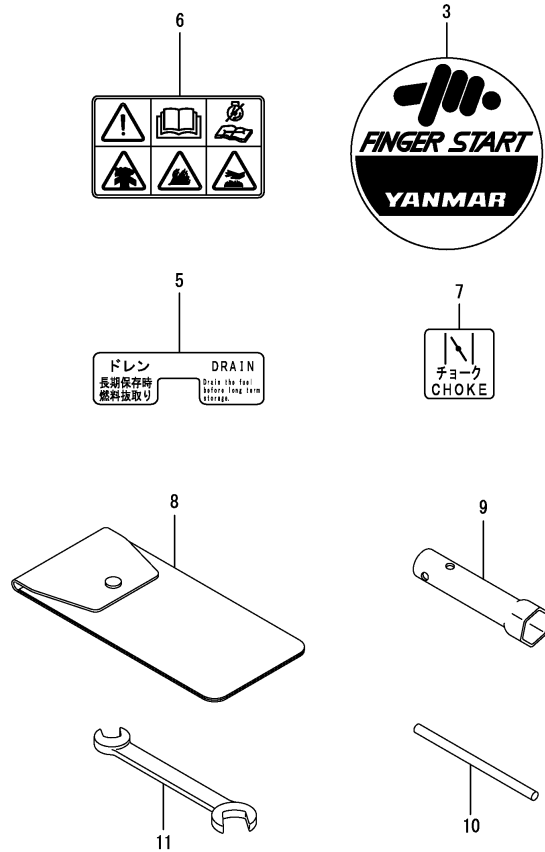
(D)=
 (E)=
 (F)=



No.	Lev.	Parts No.	Description	Q'ty						I	R
				(A)	(B)	(C)	(D)	(E)	(F)		
1	1	160610-03050	BREATHER ASSY	1	1						
2	1	160991-03180	PIPE , BREATHER	1	1						
3	1	160699-01331	GASKET, HEAD	1	1						
4	1	160610-04201	BOLT, FLANGE M8X53	4	4						
5	1	160690-11010	HEAD, CYLINDER	1	1						
10	1	160690-11100	VALVE, INTAKE	1	1						
11	1	160690-11110	VALVE, EXHAUST	1	1						
12	1	160690-11120	SPRING, VALVE	2	2						
13	1	160690-11180	RETAINER, SPRING	2	2						
14	1	160699-11200	ARM, ROCKER	2	2						
15	1	160690-11221	PIVOT, ROCKER ARM	2	2						
16	1	160690-11271	BOLT	2	2						
17	1	160690-11280	NUT, M6X0.5	2	2						
18	1	160690-11290	PLATE, GUIDE	1	1						
19	1	26216-080182	STUD, M8X 18	2	2						
20	1	160690-11300	BONNET	1	1						
21	1	160690-11311	GASKET, BONNET	1	1						
22	1	26106-060202	BOLT, M6X 20 PLATED	1	1						
23	1	26106-060352	BOLT, M6X 35 PLATED	2	2						

Remarks
 (REMARKS)"EFFECTIVE MACHINE NO." OF
 ENGINE IS INDICATED ON THE
 ENGINE LABEL WHICH IS SHOWN
 IN FIG.9.

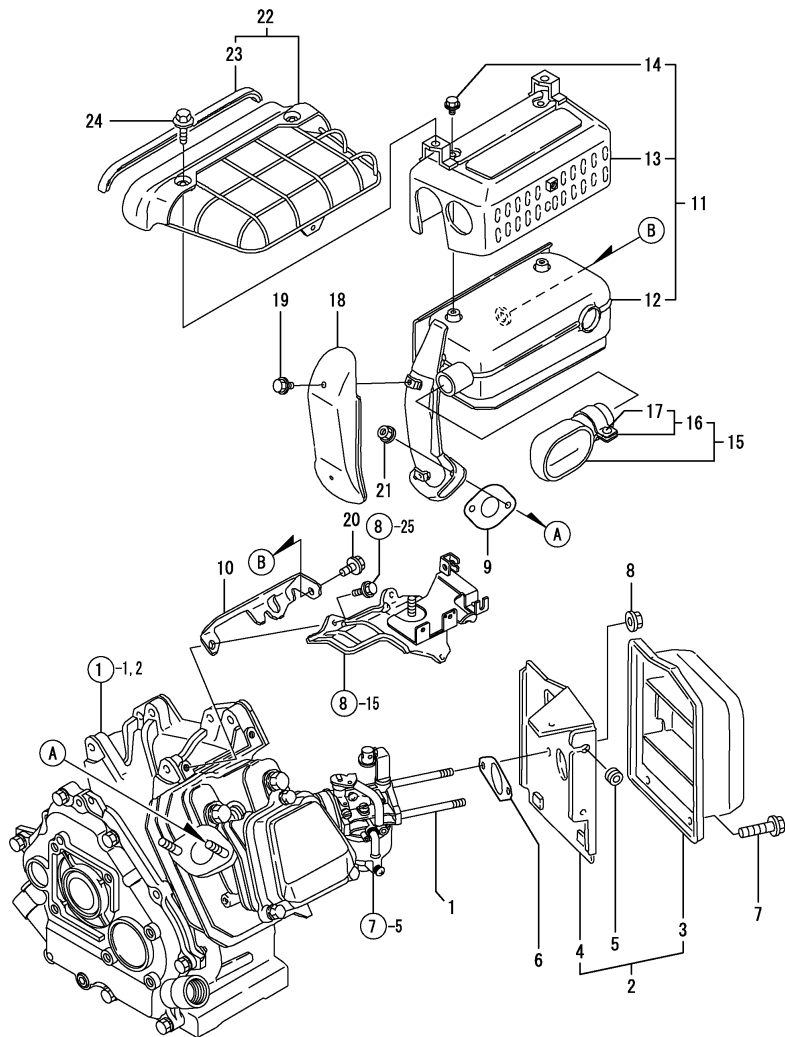
Fig.3. TOOL & LABEL



No.	Lev.	Parts No.	Description	Q'ty						I	R
				(A)	(B)	(C)	(D)	(E)	(F)		
3	1	160798-07100	LABEL, FINGER START	1	1						
5	1	160690-07260	LABEL, DRAIN	1	1						
6	1	160991-07260	LABEL	1	1						
7	1	160690-07400	LABEL	1	1						
8	1	160708-92610	BAG, TOOL	1	1						
9	1	160120-92700	WRENCH, 21 L86	1	1						
10	1	160110-92710	HANDLE, WRENCH	1	1						
11	1	28110-100120	SPANNER, 10X12	1	1						

Remarks
 (REMARKS)"EFFECTIVE MACHINE NO." OF
 ENGINE IS INDICATED ON THE
 ENGINE LABEL WHICH IS SHOWN
 IN FIG.9.

Fig.4. AIR CLEANER & MUFFLER



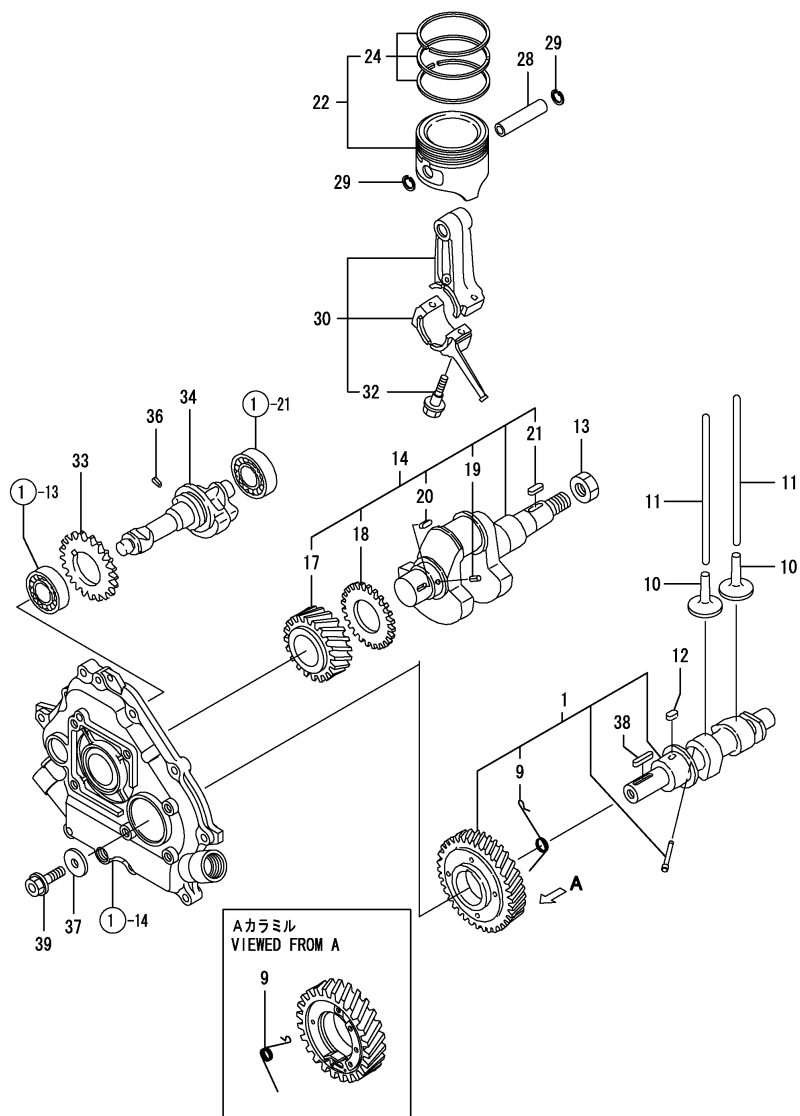
(A)=GA210E-SJ
(B)=GA210E-SEJ
(C)=

(D)=
(E)=
(F)=

No.	Lev.	Parts No.	Description	Q'ty						I	R
				(A)	(B)	(C)	(D)	(E)	(F)		
1	1	160610-04570	BOLT, M6X70	2	2						
2	1	160698-12510	CLEANER ASSY, AIR	1	1						
3	2	160891-12530	CAP, AIR CLEANER	1	1						
4	2	160698-12540	BODY, AIR CLEANER	1	1						
5	1	160763-12600	GROMMET	1	1						
6	1	160610-56151	GASKET, CARBURETOR	1	1						
7	1	26106-060082	BOLT, M6X 8 PLATED	3	3						
8	1	26366-060002	NUT, M6	2	2						
9	1	160690-13200	GASKET, MUFFLER	1	1						
10	1	160690-13550	BRACKET, MUFFLER	1	1						
11	1	160699-13620	MUFFLER ASSY	1	1						
12	2	160699-13500	MUFFLER	1	1						
13	2	160698-13560	COVER	1	1						
14	2	26106-060082	BOLT, M6X 8 PLATED	3	3						
15	1	114252-13800	EXTENSION ASSY	1	1						
16	2	114252-13910	CLAMP	1	1						
17	3	114252-13960	SCREW 6X 25	1	1						
18	1	160690-13900	COVER	1	1						
19	1	26106-060082	BOLT, M6X 8 PLATED	2	2						
20	1	26106-080142	BOLT, M8X 14 PLATED	1	1						
21	1	26366-080002	NUT, M8	2	2						
22	1	160690-13700	COVER	1	1						
23	2	160690-13911	RUBBER, SEAL	1	1						
24	1	26106-060082	BOLT, M6X 8 PLATED	3	3						

Remarks
(REMARKS)"EFFECTIVE MACHINE NO." OF
ENGINE IS INDICATED ON THE
ENGINE LABEL WHICH IS SHOWN
IN FIG.9.

Fig.5. CRANKSHAFT,PISTON & CAMSHAFT



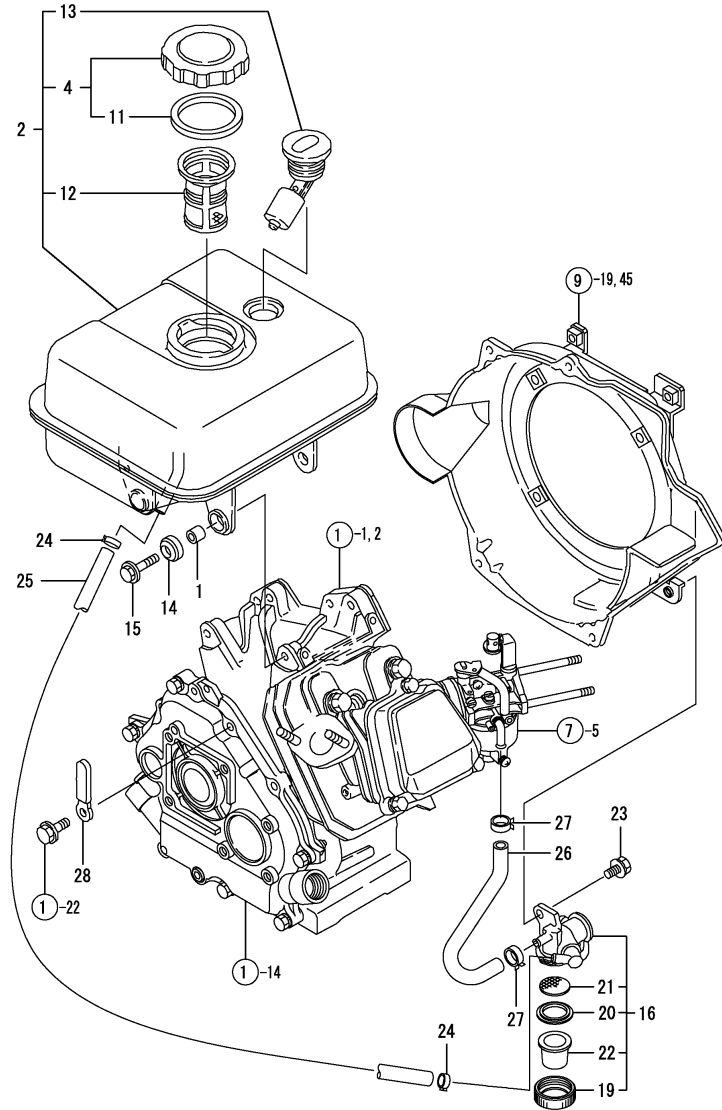
(A)=GA210E-SJ
 (B)=GA210E-SEJ
 (C)=

(D)=
 (E)=
 (F)=

No.	Lev.	Parts No.	Description	Q'ty						I	R
				(A)	(B)	(C)	(D)	(E)	(F)		
1	1	160690-14051	CAMSHAFT ASSY	1	1						
9	2	160690-14571	SPRING,DECOMPRESSION	1	1						
10	1	160490-14200	TAPPET	2	2						
11	1	114250-14400	ROD, PUSH	2	2						
12	1	22512-040120	KEY, 4X 12	1	1						
13	1	160610-04910	NUT, FLYWHEEL M14	1	1						
14	1	760699-21700	CRANKSHAFT ASSY	1	1						
17	2	160690-21201	GEAR, CRANKSHAFT	1	1						
18	2	160699-21220	GEAR, BALANCER	1	1						
19	2	22351-040008	PIN, SPRING 4.0X 8	1	1						
20	2	22512-040120	KEY, 4X 12	1	1						
21	2	22512-040160	KEY, 4X 16	1	1						
22	1	160699-22010	PISTON ASSY	1	1						
24	2	760699-22500	RING SET, PISTON	1	1						
28	1	160690-22300	PIN, PISTON	1	1						
29	1	22252-000160	RING, 16	2	2						
30	1	760690-23700	ROD ASSY, CONNECTING	1	1						
32	2	26106-060302	BOLT, M6X 30 PLATED	2	2						
33	1	160699-21850	GEAR, BALANCER	1	1						
34	1	160699-28010	SHAFT, BALANCER	1	1						
36	1	22351-040008	PIN, SPRING 4.0X 8	1	1						
37	1	160310-14550	WASHER	1	1						
38	1	22512-050300	KEY, 5X 30	1	1						
39	1	26106-080202	BOLT, M8X 20 PLATED	1	1						

Remarks
 (REMARKS)"EFFECTIVE MACHINE NO." OF
 ENGINE IS INDICATED ON THE
 ENGINE LABEL WHICH IS SHOWN
 IN FIG.9.

Fig.6. FUEL OIL TANK & FUEL OIL LINE



(A)=GA210E-SJ
(B)=GA210E-SEJ
(C)=

(D)=
(E)=
(F)=

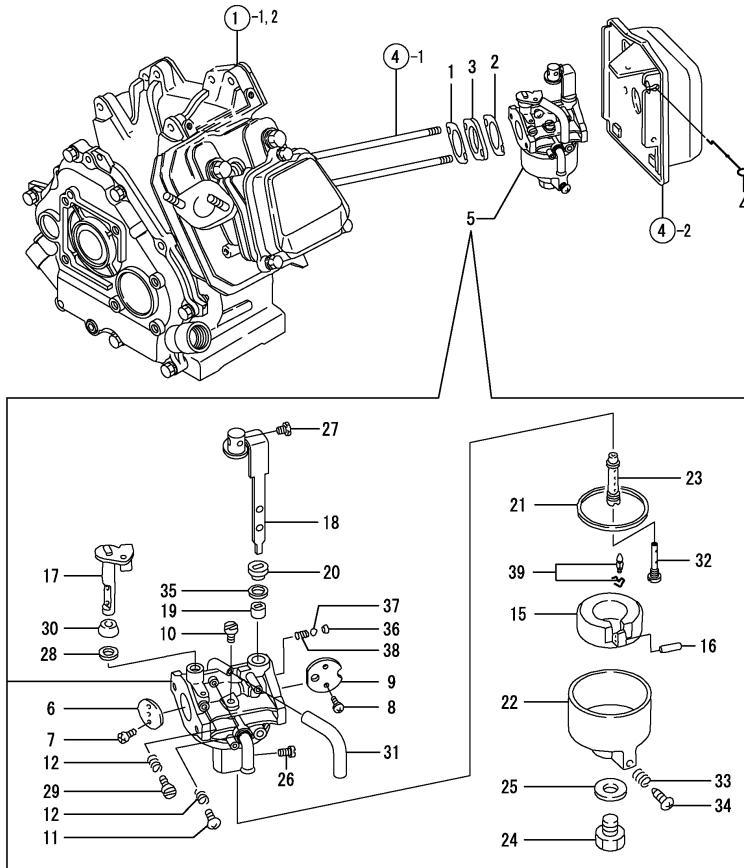
No.	Lev.	Parts No.	Description	Q'ty						I	R
				(A)	(B)	(C)	(D)	(E)	(F)		
1	1	114250-45310	COLLAR	4	4						
2	1	760690-55710	TANK ASSY, FUEL	1	1						
4	2	160710-55061	CAP ASSY	1	1						
11	3	160393-55050	GASKET	1	1						
12	2	160610-55100	FILTER, FUEL	1	1						
13	2	160762-55150	GAUGE, FUEL	1	1						
14	1	160690-55462	DAMPER, FUEL TANK	4	4						
15	1	160690-55140	BOLT	4	4						
16	1	160692-55330	COCK ASSY, FUEL	1	1						
19	2	160710-55360	RING	1	1						
20	2	160710-55370	GASKET	1	1						
21	2	160710-55382	FILTER	1	1						
22	2	160903-55390	CUP, FUEL COCK L57	1	1						
23	1	26106-060102	BOLT, M6X 10 PLATED	1	1						
24	1	106990-44660	CLIP, HOSE 12.5	2	2						
25	1	160698-59351	HOSE, FUEL A-420	1	1						
26	1	160820-59391	HOSE, D11.5/L159	1	1						
26-1	1	160792-59361	HOSE, FUEL B-180	1	1						N
27	1	119520-03990	CLIP, HOSE 10.5	2	2						
28	1	160710-78710	CLAMP, CORD	1	1						

Remarks
(REMARKS)"EFFECTIVE MACHINE NO." OF
ENGINE IS INDICATED ON THE
ENGINE LABEL WHICH IS SHOWN
IN FIG.9.

Fig.7. CARBURETOR

(A)=GA210E-SJ
 (B)=GA210E-SEJ
 (C)=

(D)=
 (E)=
 (F)=

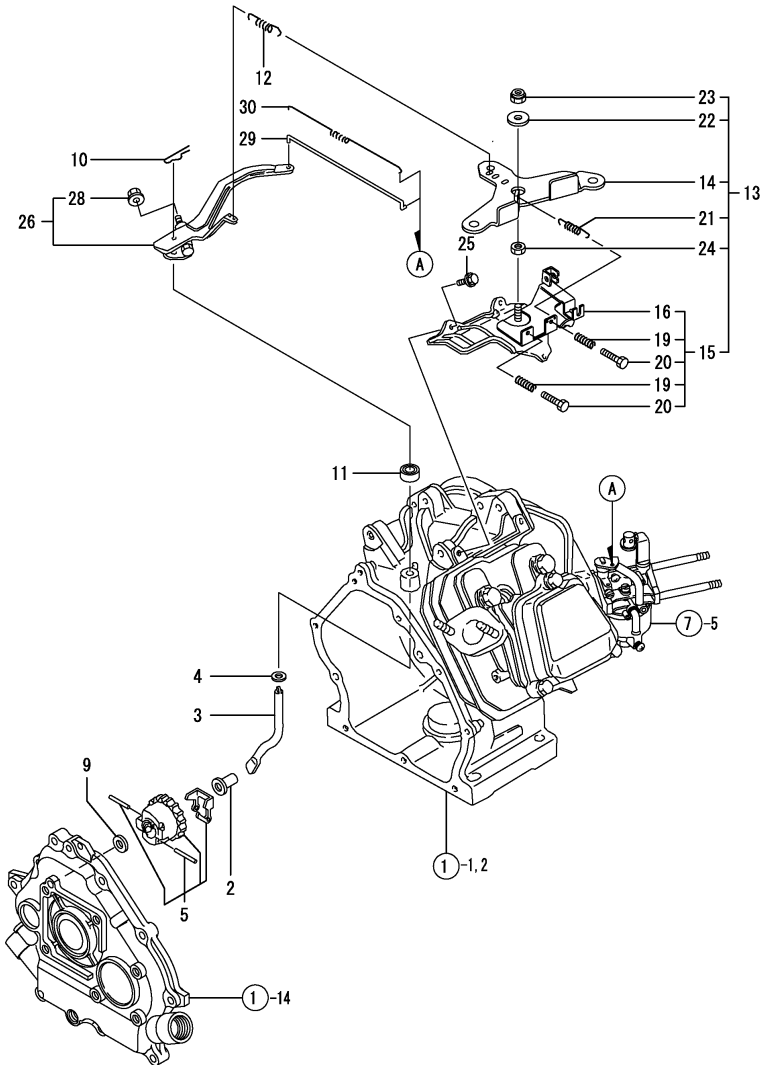


No.	Lev.	Parts No.	Description	Q'ty						I	R
				(A)	(B)	(C)	(D)	(E)	(F)		
1	1	160610-56151	GASKET, CARBURETOR	1	1						
2	1	160610-56151	GASKET, CARBURETOR	1	1						
3	1	160690-56160	SPACER, CARBURETOR	1	1						
4	1	160891-56900	ROD, CHOKE	1	1						
5	1	160699-56090	CARBURETOR ASSY	1	1						
6	2	160698-56520	VALVE, THROTTLE	1	1						
7	2	160690-56560	SCREW	2	2						
8	2	160690-56570	SCREW	2	2						
9	2	160590-56530	VALVE, CHOKE	1	1						
10	2	160710-56740	JET, PILOT	1	1						
11	2	160692-56710	SCREW	1	1						
12	2	181230-56380	SPRING	2	2						
15	2	160769-56620	FLOAT ASSY	1	1						
16	2	160610-56630	PIN, FLOAT	1	1						
17	2	160699-56550	SHAFT, THROTTLE	1	1						
18	2	160698-56650	LEVER, CHOKE	1	1						
19	2	160810-56580	RING, CHOKE SHAFT	1	1						
20	2	160810-56590	RING, CHOKE LEVER	1	1						
21	2	160610-56610	GASKET	1	1						
22	2	160699-56600	BODY, FLOAT CHAMBER	1	1						
23	2	160590-56671	NOZZLE, MAIN	1	1						
24	2	160769-56660	BOLT	1	1						
25	2	160810-56550	WASHER	1	1						
26	2	160699-56580	JET, ENRICHMENT	1	1						
27	2	26117-040088	BOLT M 4X 8 PLATED	1	1						
28	2	160593-56540	SEAL	1	1						
29	2	160667-56750	ADJUSTER	1	1						
30	2	160702-56720	RING	1	1						
31	2	160692-56770	HOSE	1	1						
32	2	160590-56800	NOZZLE, MAIN	1	1						
33	2	181230-56380	SPRING	1	1						
34	2	160610-56900	SCREW	1	1						
35	2	160692-56800	RUBBER, SEAL	1	1						
36	2	160692-56700	PLUG	1	1						
37	2	160310-56990	BALL, STEEL	1	1						
38	2	160310-56980	SPRING, CHOKE	1	1						
39	1	160692-56560	VALVE ASSY, NEEDLE	1	1						1

Remarks

(1) REPAIR PART.
 (REMARKS)"EFFECTIVE MACHINE NO." OF
 ENGINE IS INDICATED ON THE
 ENGINE LABEL WHICH IS SHOWN
 IN FIG.9.

Fig.8. GOVERNOR & CONTROL DEVICE



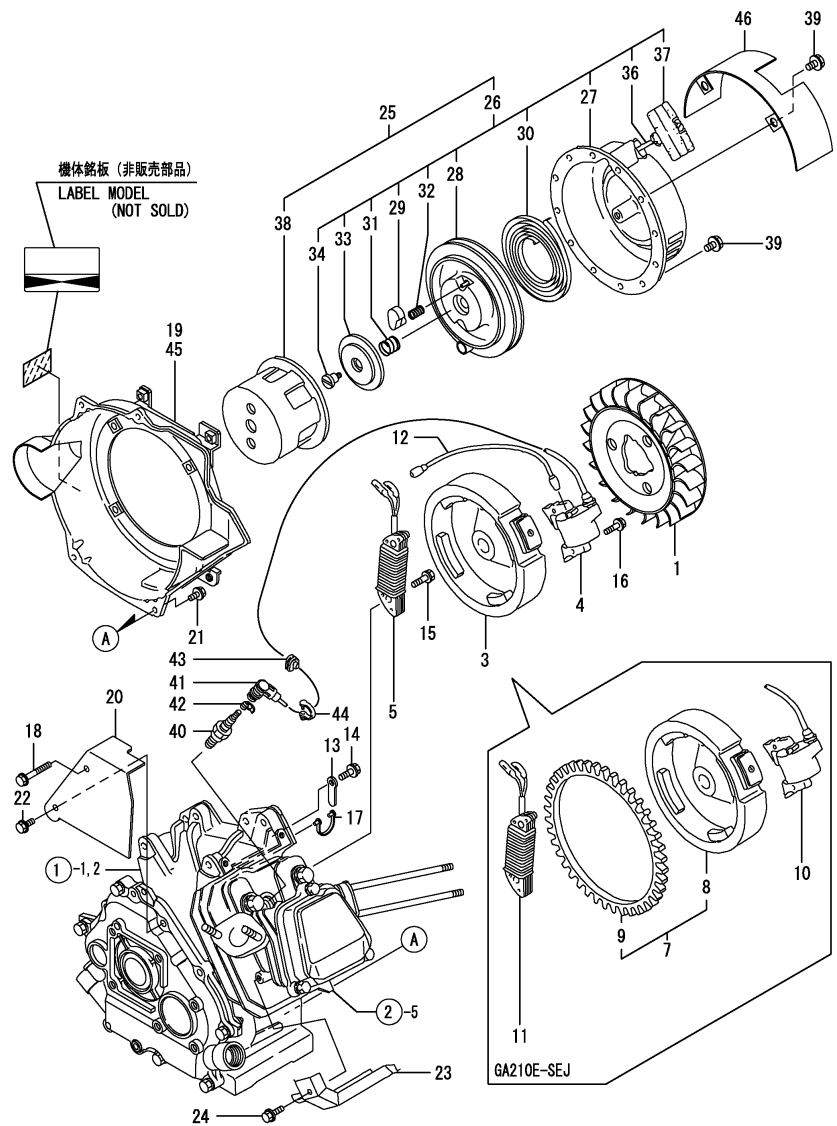
(A)=GA210E-SJ
(B)=GA210E-SEJ
(C)=

(D)=
(E)=
(F)=

No.	Lev.	Parts No.	Description	Q'ty						I	R
				(A)	(B)	(C)	(D)	(E)	(F)		
2	1	160690-61301	SPINDLE	1	1						
3	1	160690-61311	SHAFT	1	1						
4	1	160690-61450	WASHER	1	1						
5	1	160690-61600	GEAR ASSY, GOVERNOR	1	1						
9	1	160120-76940	WASHER	1	1						
10	1	22372-080000	PIN, SNAP 8	1	1						
11	1	114770-61600	SEAL, OIL	1	1						
12	1	160690-66011	SPRING, GOVERNOR	1	1						
13	1	160698-66100	CONTROLLER ASSY	1	1						
14	2	160692-66063	LEVER, CONTROL	1	1						
15	2	160698-66110	BASE ASSY	1	1						
16	3	160698-66140	BASE ASSY	1	1						
19	3	160520-66291	SPRING	2	2						
20	3	26117-040257	BOLT, M4X 25 PLATED	2	2						
21	2	160664-66220	SPRING, RETURN	1	1						
22	2	160670-66350	COLLAR	1	1						
23	2	26347-060002	NUT, M6	1	1						
24	2	26757-060002	NUT, LOCK M6	1	1						
25	1	26476-060142	SCREW, TAPPING M6X14	3	3						
26	1	160690-66180	LEVER ASSY, GOVERNOR	1	1						
28	2	26366-060002	NUT, M6	1	1						
29	1	160690-66200	LINK, THROTTLE	1	1						
30	1	160690-66210	SPRING, TENSION	1	1						

Remarks
(REMARKS)"EFFECTIVE MACHINE NO." OF
ENGINE IS INDICATED ON THE
ENGINE LABEL WHICH IS SHOWN
IN FIG.9.

Fig.9. FLY MAGNET & STARTING DEVICE



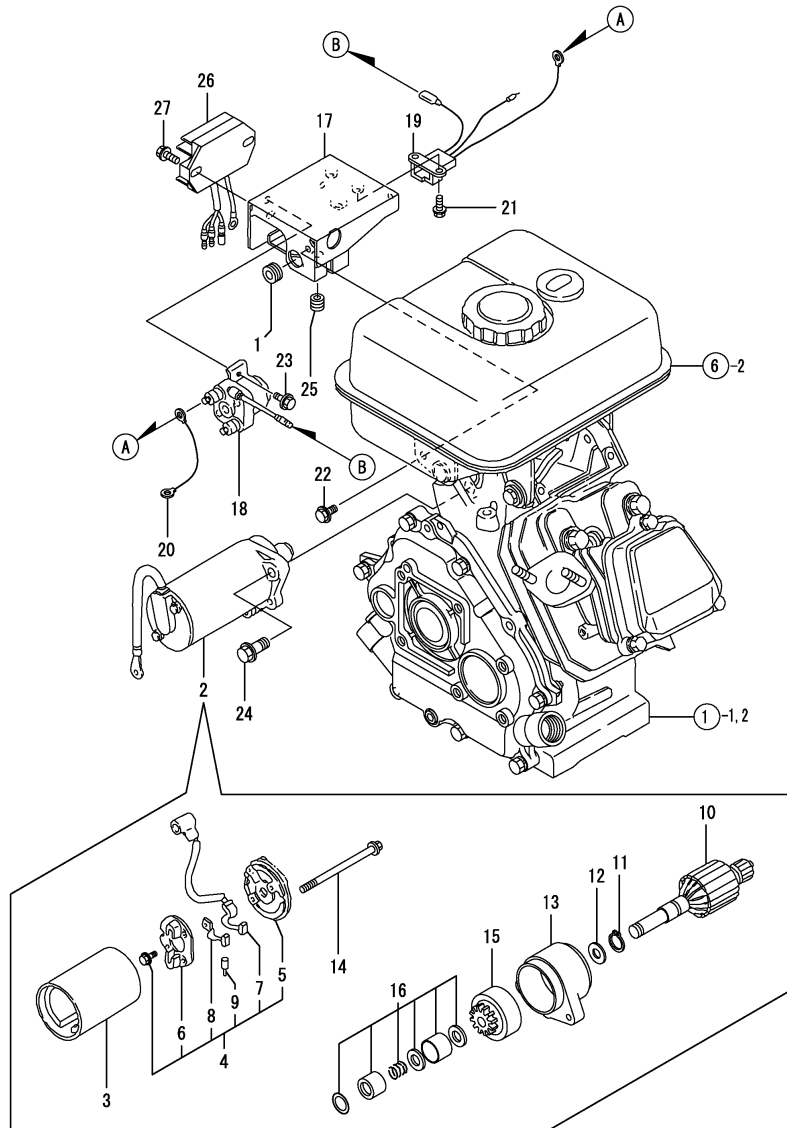
(A)=GA210E-SJ
(B)=GA210E-SEJ
(C)=

(D)=
(E)=
(F)=

No.	Lev.	Parts No.	Description	Q'ty						I	R
				(A)	(B)	(C)	(D)	(E)	(F)		
1	1	160699-45010	CASE, COOLING FAN	1	1						
3	1	160693-78511	ROTOR	1							
4	1	160690-78533	COIL, IGNITION	1							
5	1	160798-78620	COIL, LAMP	1							
7	1	160698-78512	ROTOR ASSY		1						
8	2	160698-78503	ROTOR		1						
9	2	160691-78171	GEAR, RING		1						
10	1	160690-78533	COIL, IGNITION		1						
11	1	160793-78630	COIL, CHARGE		1						
12	1	160690-78230	WIRE	1	1						
13	1	160710-78710	CLAMP, CORD		1						
14	1	26476-060142	SCREW, TAPPING M6X14		1						
15	1	26476-060252	SCREW, TAPPING M6X25	2	2						
16	1	26476-060302	SCREW, TAPPING M6X30	2	2						
17	1	29610-000650	CLAMP, SPEED 065	1	1						
18	1	160611-04350	BOLT, M6X70	1	1						
19	1	160698-45120	CASE, COOLING FAN		1						
20	1	160698-45210	COVER	1	1						
21	1	26476-060142	SCREW, TAPPING M6X14	4	4						
22	1	26476-060142	SCREW, TAPPING M6X14	1	1						
23	1	160699-45200	COVER	1	1						
24	1	26476-060142	SCREW, TAPPING M6X14	1	1						
25	1	160698-76060	STARTER ASSY, RECOIL	1	1						
26	2	160698-76260	STARTER ASSY, RECOIL	1	1						
27	3	160698-76510	CASE ASSY, STARTER	1	1						
28	3	160698-76520	REEL	1	1						
29	3	160698-76530	RATCHET	2	2						
30	3	160698-76540	SPRING, SPIRAL	1	1						
31	3	160690-76561	SPRING, FRICTION	1	1						
32	3	160698-76560	SPRING, RETURN	2	2						
33	3	160698-76570	GUIDE, RATCHET	1	1						
34	3	160698-76580	SCREW	1	1						
36	3	160698-76660	ROPE, STARTER	1	1						
37	3	160698-76670	KNOB, STARTER	1	1						
38	2	160690-76591	PULLEY, STARTER	1	1						
39	1	26106-060082	BOLT, M6X 8 PLATED	4	4						
40	1	160793-78010	PLUG, SPARK	1	1						
41	1	160700-78040	CAP, PLUG	1	1						
42	1	160700-78050	TERMINAL, PLUG	1	1						
43	1	160700-78720	GROMMET	1	1						
44	1	29610-000950	CLAMP, SPEED 095	1	1						
45	1	160698-45110	CASE, COOLING FAN	1							
46	1	160708-76900	COVER, RECOIL	1	1						

Remarks
(REMARKS)"EFFECTIVE MACHINE NO." OF
ENGINE IS INDICATED ON THE
ENGINE LABEL WHICH IS SHOWN
IN FIG.9.

Fig.10. STARTING MOTOR



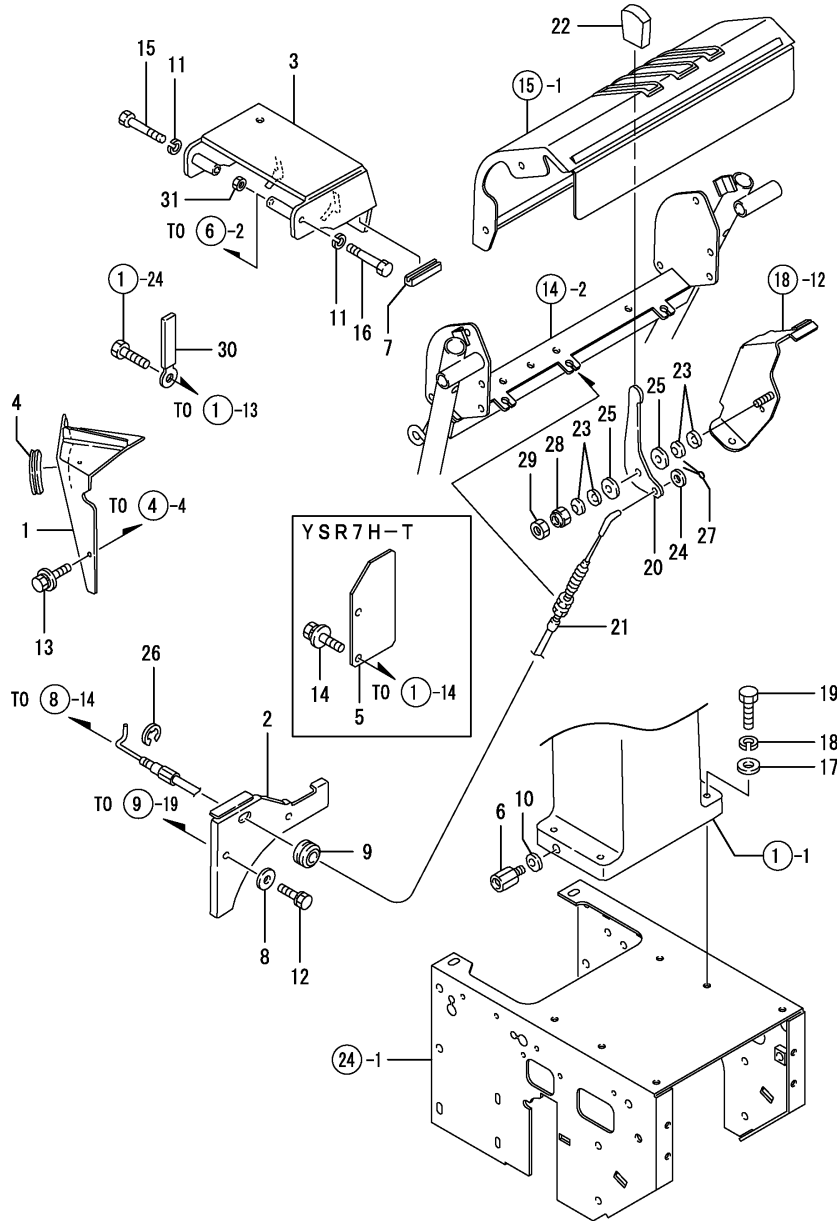
(A)=GA210E-SJ
(B)=GA210E-SEJ
(C)=

(D)=
(E)=
(F)=

No.	Lev.	Parts No.	Description	Q'ty						I	R
				(A)	(B)	(C)	(D)	(E)	(F)		
1	1	160341-01950	PIPE		1						
2	1	160691-77020	MOTOR, STARTING		1						
3	2	X131009601X	YORK ASSY		1						
4	2	X133004703X	BRACKET ASSY, REAR		1						
5	3	X224023400X	BRACKET, REAR		1						
6	3	X133104900X	HOLDER ASSY, BLUSH		1						
7	3	X266008503X	BLUSH ASSY(+)		1						
8	3	X266008300X	BLUH ASSY(-)		1						
9	3	X520003100X	COIL, SPRING		2						
10	2	X132009202X	ARMATURE ASSY		1						
11	2	X8580151002	RING, RETAINING		1						
12	2	X503106201X	SHIM WASHER		1						
13	2	X224211001X	BRACKET, FRONT		1						
14	2	X8167050951	BOLT		1						
15	2	X136105701X	CLUTCH ASSY, PINION		1						
16	2	X366102100X	STOPPER, PINION		1						
17	1	160691-77310	BRACKET, ELECTRIC		1						
18	1	160725-77380	SWITCH, SOLENOID		1						
19	1	160699-77990	HARNES, WIRE		1						
20	1	160891-78200	WIRE, LEAD		1						
21	1	26023-040102	SCREW, M4X10		2						
22	1	26106-060102	BOLT, M6X 10 PLATED		2						
23	1	26106-060102	BOLT, M6X 10 PLATED		1						
24	1	26106-080252	BOLT, M8X 25 PLATED		2						
25	1	29311-122000	GROMET, 12.0X2		1						
26	1	160715-77522	REGULATOR, RS2727		1						
26-1	1	183232-77521	REGULATOR, RS2728		1						N
			(B=*2006.8)								
26-2	1	160998-77530	REGULATOR ASSY		1						N
			(B=*2009.12)								
27	1	26106-060202	BOLT, M6X 20 PLATED		2						

Remarks
(REMARKS)"EFFECTIVE MACHINE NO." OF
ENGINE IS INDICATED ON THE
ENGINE LABEL WHICH IS SHOWN
IN FIG.9.

Fig.11. ENGINE RELATED

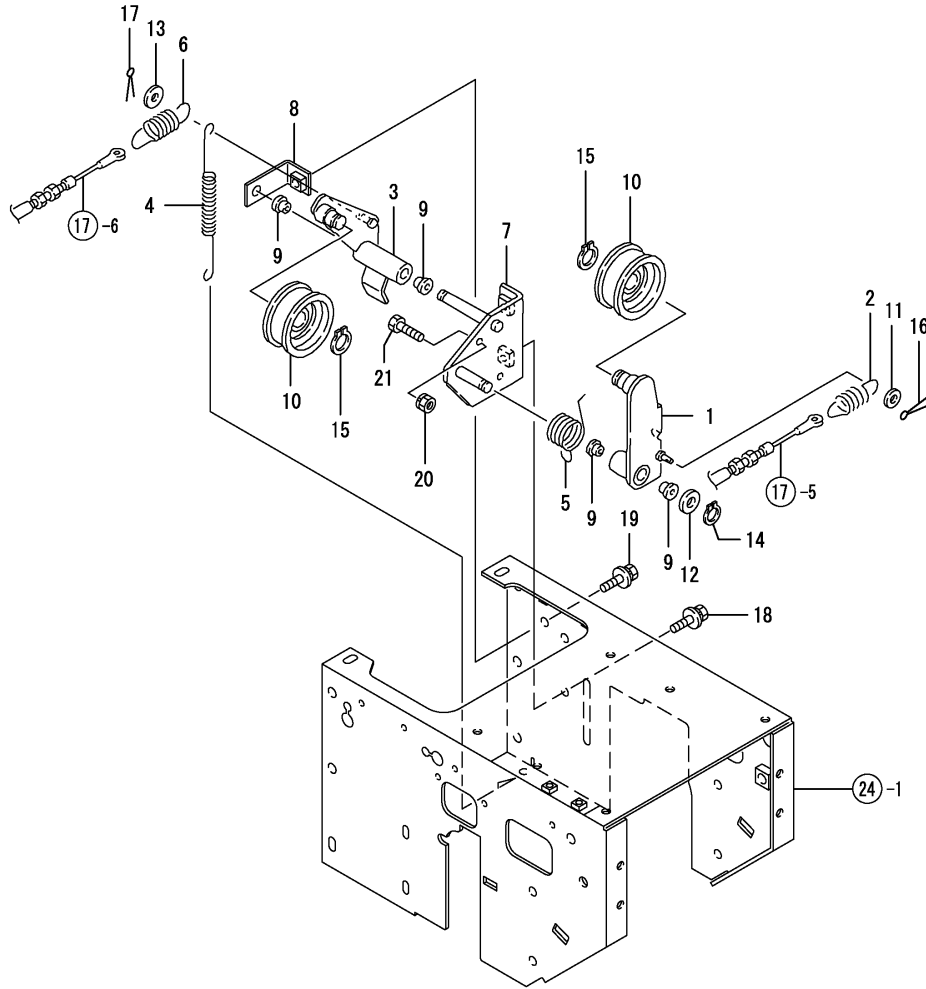


(A)=YSR7H-T
(B)=YSR7H-TS
(C)=

(D)=
(E)=
(F)=

No.	Lev.	Parts No.	Description	Qty						I	R
				(A)	(B)	(C)	(D)	(E)	(F)		
1	1	1N1713-00040	COVER B COMP.,AUX.	1	1						
1-1	1	1N1713-00040-1	COVER B COMP.,AUX.	1	1						R
		(A=F010266) (B=F010206)									
2	1	1N1713-00080	COVER A COMP.,AUX.	1	1						
2-1	1	1N1713-00080-1	COVER A COMP.,AUX.	1	1						R
		(A=F010266) (B=F010206)									
3	1	1N3330-00100	COVER,BRACKET	1	1						
3-1	1	1N3330-00100-1	COVER,BRACKET	1	1						R
		(A=F010266) (B=F010206)									
4	1	1N1713-00170	MOLDINGS 55	1	1						
5	1	1N3360-00200	PLATE,PULLEY GUARD	1							
5-1	1	1N3360-00200-1	PLATE,PULLEY GUARD	1							R
		(A=F010266)									
6	1	1N3021-00250	JOINT,WASTE OIL	1	1						
7	1	1S9050-01430	EDGE RUBBER 50	1	1						
8	1	1J3999-02010	WASHER 6	2	2						
9	1	194080-58820	GROMMET, 15	1	1						
10	1	22190-120000	WASHER, SEAL 12	1	1						
11	1	22217-060000	WASHER, SPRING 6	2	2						
12	1	26016-060204	BOLT M 6X 20	2	2						
13	1	26018-060124	BOLT M 6X 12	2	2						
14	1	26018-080164	BOLT M 8X 16	2							
15	1	26116-060502	BOLT, M6X 50 PLATED	1	1						
16	1	26116-060552	BOLT, M6X 55 PLATED	1	1						
17	1	22137-080000	WASHER, 8	4	4						
18	1	22217-080000	WASHER, SPRING 8	4	4						
19	1	26116-080352	BOLT, M8X 35 PLATED	4	4						
20	1	1N3300-02100	LEVER	1	1						
20-1	1	1N3390-02100-1	LEVER,ACCEL	1	1						R
		(A=F010266) (B=F010206)									
21	1	1N3300-02150	WIRE ASSY, THROTTLE	1	1						
22	1	194273-47910	KNOB, LEVER	1	1						
23	1	1N1570-51130	SPRING,BELLEVILLE	4	4						
24	1	22117-060000	WASHER, 6	1	1						
25	1	22137-080000	WASHER, 8	2	2						
26	1	22272-000050	RING, E- 5	1	1						
27	1	22417-200100	COTTER PIN 2.0X10	1	1						
28	1	26347-080002	NUT, M8	1	1						
29	1	26717-080002	NUT, M8	1	1						
30	1	1N1710-32600	CLAMP 8X70	1	1						W
		(A=F010316) (B=F010259)									
31	1	26717-060002	NUT, M6	2							W
		(A=F010001)									

Fig.12. TENSION CLUTCH

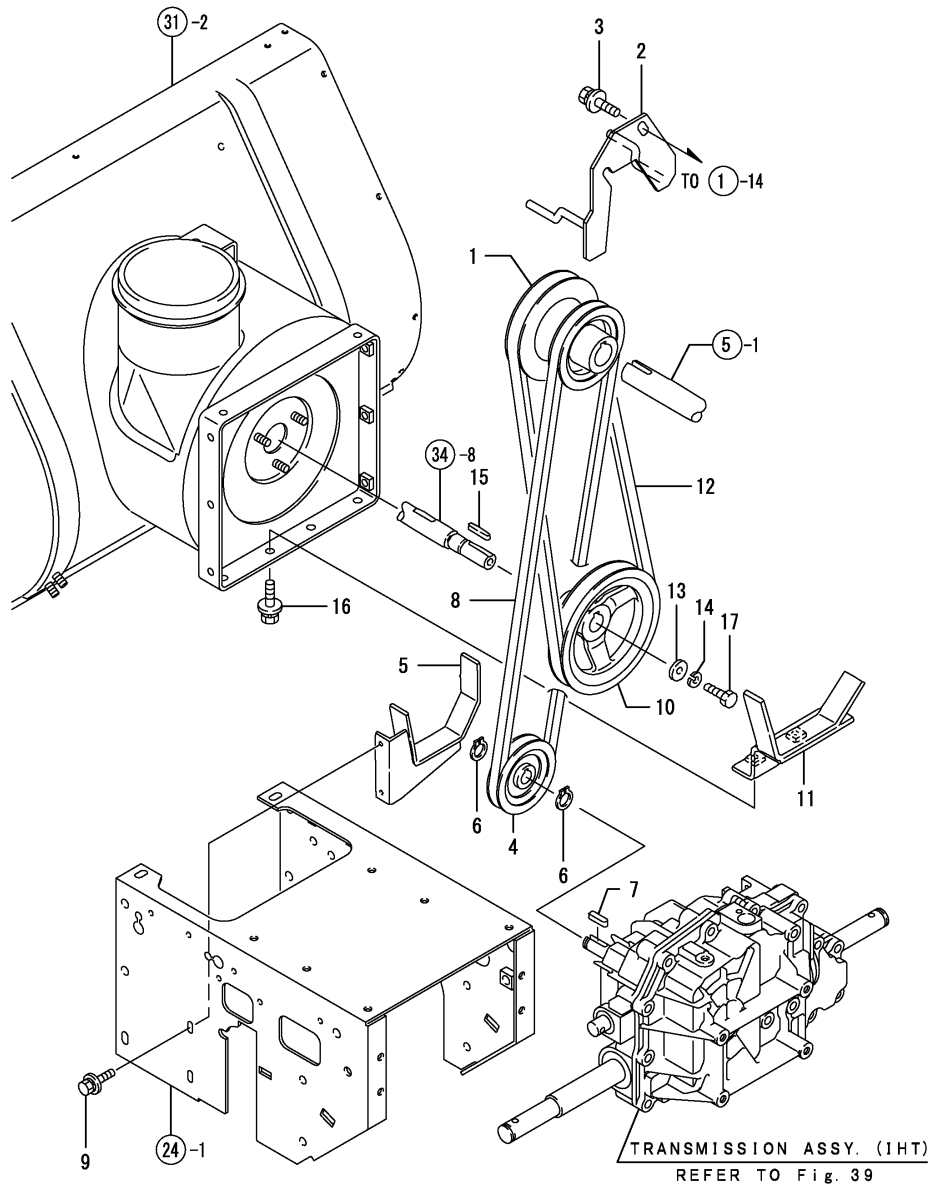


(A)=YSR7H-T
(B)=YSR7H-TS
(C)=

(D)=
(E)=
(F)=

No.	Lev.	Parts No.	Description	Qty						I	R
				(A)	(B)	(C)	(D)	(E)	(F)		
1	1	1N3335-11000	TENSION,TRAVEL	1	1						
1-1	1	1N3335-11000-1	TENSION,TRAVEL	1	1						R
		(A=F010266) (B=F010206)									
2	1	1N3335-11080	SPRING	1	1						
3	1	1N3335-11100	TENSION,SNOW REMOVE	1	1						
3-1	1	1N3335-11100-1	TENSION,SNOW REMOVE	1	1						R
		(A=F010266) (B=F010206)									
4	1	1N3330-11250	SPRING	1	1						
5	1	1N3021-11260	SPRING 26,TORSION	1	1						
6	1	1N3300-11260	SPRING 17.5X60.5	1	1						
7	1	1N3335-11300	FULCRUM,TENSION	1	1						
7-1	1	1N3335-11300-1	FULCRUM,TENSION	1	1						R
		(A=F010266) (B=F010206)									
8	1	1N3335-11400	CATCH,TENSION FULCRU	1	1						
8-1	1	1N3335-11400-1	CATCH,TENSION FULCRU	1	1						R
		(A=F010266) (B=F010206)									
9	1	1N3021-31580	BUSH 10X15,FLANGED	4	4						
10	1	1E7030-51301	ROLLER ASSY, TENSION	2	2						
10-1	1	1E7030-51301-1	ROLLER ASSY, TENSION	2	2						R
		(A=F010001) (B=F010001)									
11	1	22137-060000	WASHER, 6	1	1						
12	1	22137-100000	WASHER, 10	1	1						
13	1	22157-060000	WASHER, 6	1	1						
14	1	22242-000100	RING, 10	1	1						
15	1	22242-000150	RING, 15	2	2						
16	1	22417-160100	COTTER PIN	1	1						
17	1	22417-160100	COTTER PIN	1	1						
18	1	26018-080162	BOLT, M8X 16	2	2						
19	1	26018-080162	BOLT, M8X 16	1	1						
20	1	26051-060002	NUT, M6	1	1						
21	1	26116-060304	BOLT, M6X 30 PLATED	1	1						

Fig.13. ENGINE PULLEY & BELT

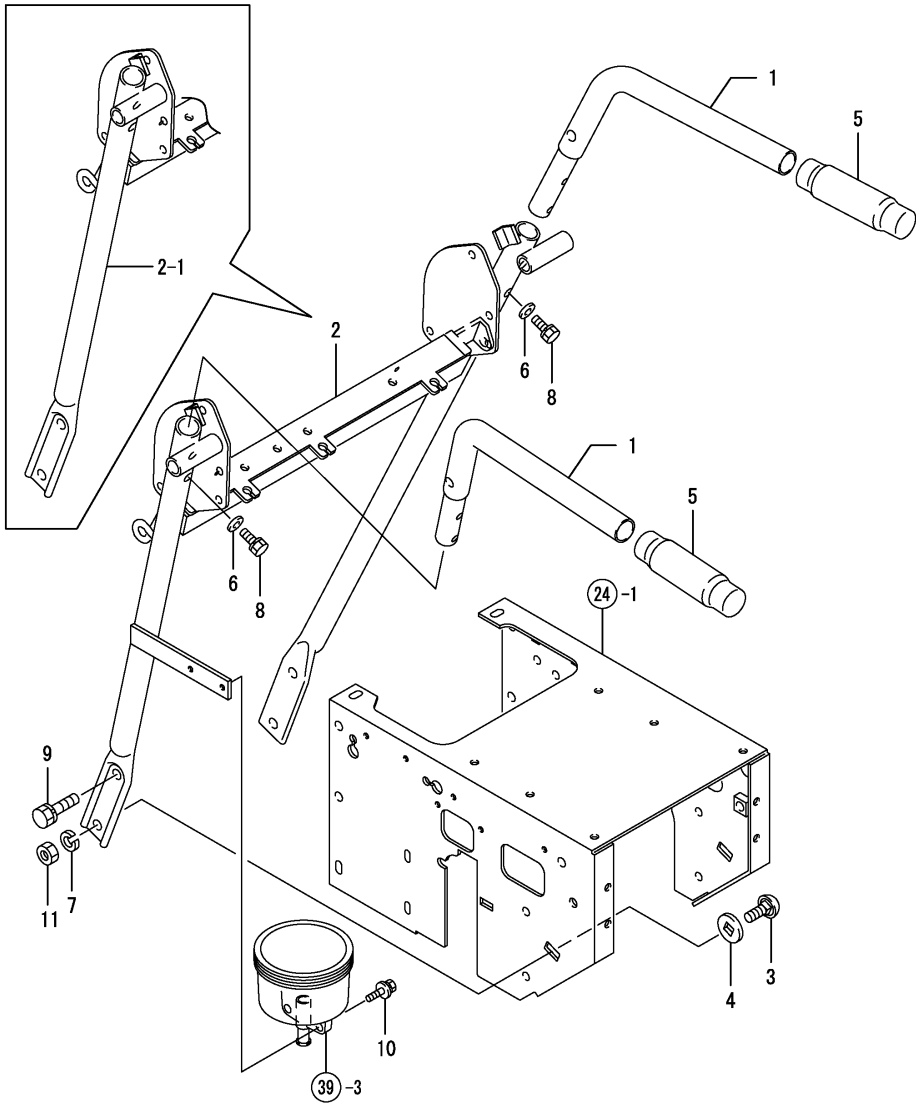


(A)=YSR7H-T
(B)=YSR7H-TS
(C)=

(D)=
(E)=
(F)=

No.	Lev.	Parts No.	Description	Q'ty						I	R
				(A)	(B)	(C)	(D)	(E)	(F)		
1	1	1N3335-12000	PULLEY,ENGINE	1	1						
1-1	1	1N3335-12000-1	PULLEY,ENGINE	1	1						R
		(A=F010266) (B=F010206)									
2	1	1N3335-12101	RETAINER,BELT	1	1						
2-1	1	1N3335-12101-1	RETAINER,BELT	1	1						R
		(A=F010266) (B=F010206)									
3	1	26018-080162	BOLT, M8X 16		2	2					
4	1	1N3021-12020	PULLEY 85A		1	1					
4-1	1	1N3021-12020-1	PULLEY 85A		1	1					R
		(A=F010266) (B=F010206)									
5	1	1N3021-12300	GUIDE B,BELT		1	1					
5-1	1	1N3021-12300-1	GUIDE B,BELT		1	1					R
		(A=F010266) (B=F010206)									
6	1	22242-000150	RING, 15		2	2					
7	1	22550-050201	KEY, 5X 20		1	1					
8	1	25122-002701	V-BELT, A27H		1	1					
9	1	26018-060164	BOLT M 6X 16		2	2					
10	1	1N3300-12010	PULLEY 133B		1	1					
10-1	1	1N3300-12010-1	PULLEY 133B		1	1					R
		(A=F010266) (B=F010206)									
11	1	1N3335-12200	BELT GUIDE		1	1					
11-1	1	1N3335-12200-1	BELT GUIDE		1	1					R
		(A=F010266) (B=F010206)									
12	1	1N3330-12300	V-BELT		1	1					
13	1	22157-080000	WASHER, 8		1	1					
14	1	22217-080000	WASHER, SPRING 8		1	1					
15	1	22512-050300	KEY, 5X 30		1	1					
16	1	26018-080162	BOLT, M8X 16		2	2					
17	1	26116-080252	BOLT, M8X 25 PLATED		1	1					

Fig.14. HANDLE



(A)=YSR7H-T
(B)=YSR7H-TS
(C)=

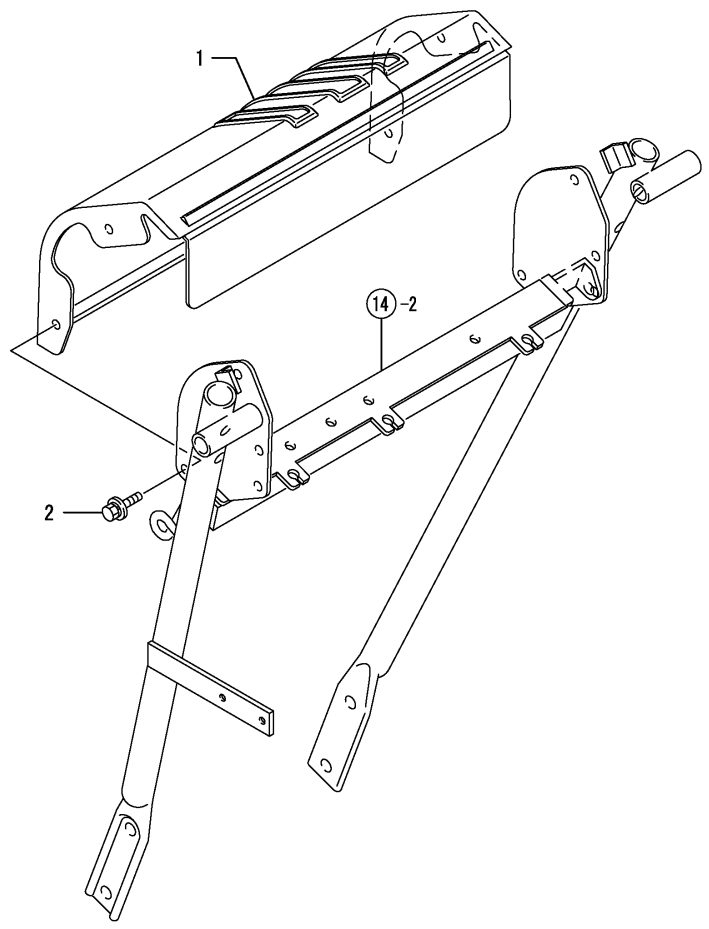
(D)=
(E)=
(F)=

No.	Lev.	Parts No.	Description	Q'ty						I	R
				(A)	(B)	(C)	(D)	(E)	(F)		
1	1	1N3300-30000-1	HANDLE	2	2						
1-1	1	1N3300-30000-2	HANDLE	2	2						R
		(A=F010266) (B=F010206)									
2	1	1N3360-30100	HANDLE FLAME	1	1						
2-1	1	1N3360-30101	FRAME,HANDLE	1	1						S
		(A=F010216) (B=F010156)									
2-2	1	1N3360-30101-1	FRAME,HANDLE	1	1						R
		(A=FXXXXXX) (B=FXXXXXX)									
3	1	1N3360-30300	BOLT	2	2						
4	1	1N3360-30350	WASHER	2	2						
5	1	1N1710-82140	GRIP BK-8,HANDLE	2	2						
6	1	22117-080000	WASHER, 8	4	4						
7	1	22217-100000	WASHER, SPRING 10	2	2						
8	1	26016-080164	BOLT M 8X 16	4	4						
9	1	26016-100252	BOLT M10X 25	2	2						
9-1	1	26016-100202	BOLT	2	2						R
		(A=F010316) (B=F010259)									
10	1	26018-060202	BOLT, M6X 20	2	2						Z
		(A=F010216) (B=F010156)									
11	1	26717-100002	NUT, M10	2	2						

Fig.15. CONTROL PANEL

(A)=YSR7H-T
 (B)=YSR7H-TS
 (C)=
 (D)=
 (E)=
 (F)=

No.	Lev.	Parts No.	Description	Q'ty						I	R
				(A)	(B)	(C)	(D)	(E)	(F)		
1	1	7N3360-30290	PANEL,CONTROL(EX,PL	1	1						
1-1	1	7N3360-30291	PANEL,CONTROL(EX,PL	1	1						N
		(A=F010266) (B=F010206)									
2	1	26018-060124	BOLT M 6X 12	4	4						

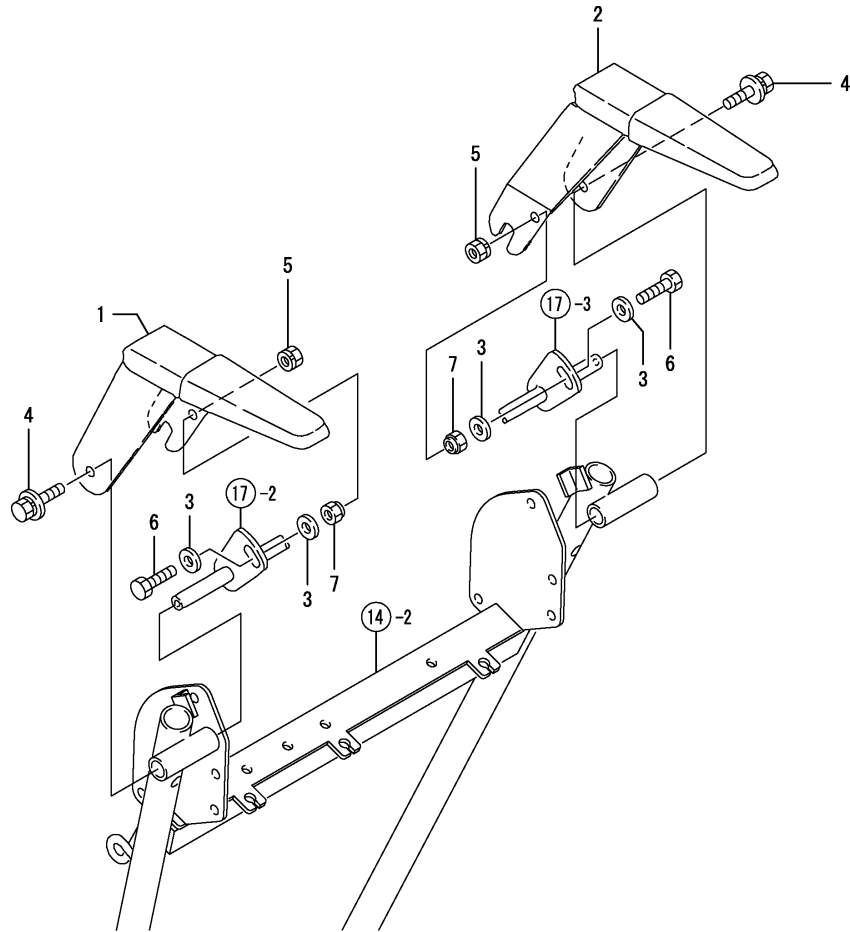


N:Old \xrightarrow{Yes} New, Q:Old \xrightarrow{No} New, R:Old \xrightarrow{Yes} New, S:Old \xrightarrow{No} New, W:Add, Z:Discontinued, F:Interchangeable by set, K:Q'ty Change
 Copyright (C) YANMAR CO., LTD. All RightsReserved.

Fig.16. DEAD MAN LEVER

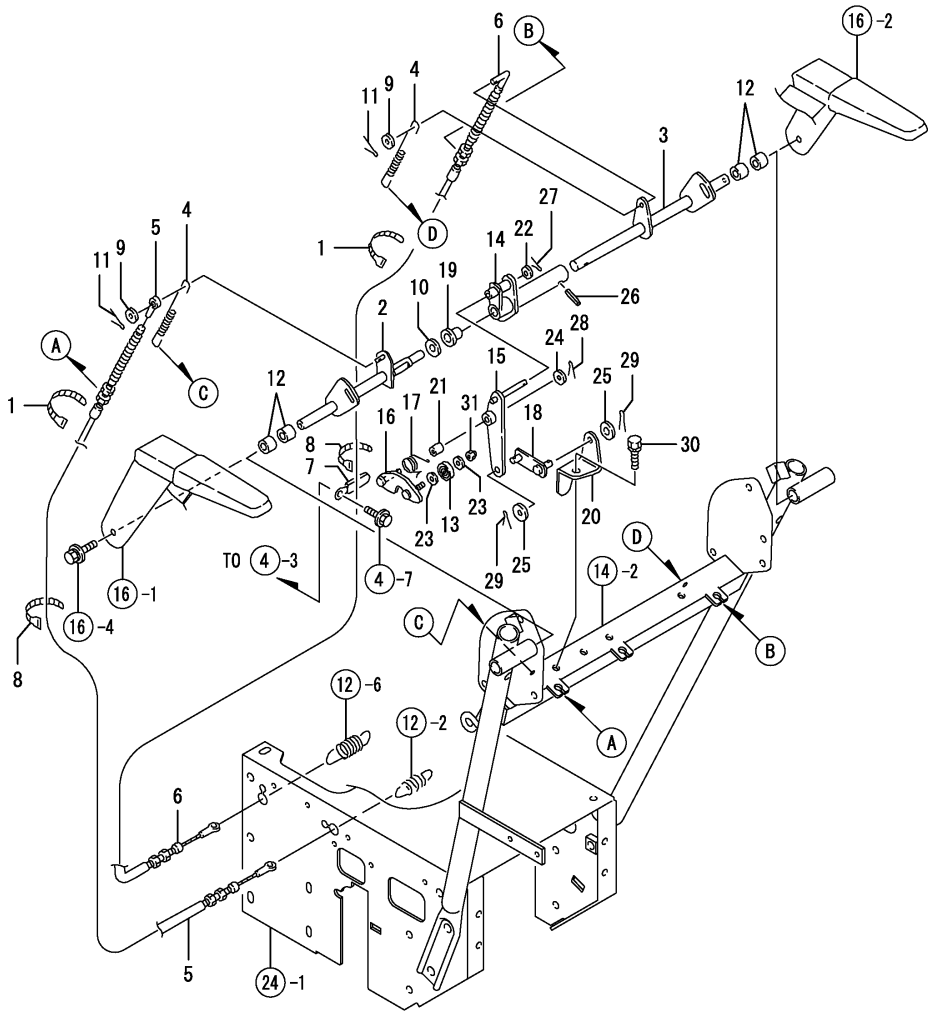
(A)=YSR7H-T
(B)=YSR7H-TS
(C)=

(D)=
(E)=
(F)=



No.	Lev.	Parts No.	Description	Q'ty						I	R
				(A)	(B)	(C)	(D)	(E)	(F)		
1	1	1N3330-31000	DEADMAN LEVER,TRAVEL	1	1						
1-1	1	1N3330-31001	DEADMAN LEVER,TRAVEL	1	1						N
		(A=F010216) (B=F010156)									
1-2	1	1N3300-31002	LEVER,TRAVEL	1	1						R
		(A=F010266) (B=F010206)									
2	1	1N3300-31050	D,LEVER,SNOW REMOVG	1	1						
2-1	1	1N3300-31051	DEADMAN LEVER,SNOW	1	1						N
		(A=F010216) (B=F010156)									
2-2	1	1N3300-31051-1	LEVER, WORK	1	1						R
		(A=F010266) (B=F010206)									
3	1	22137-080000	WASHER, 8	4	4						
4	1	26018-080164	BOLT M 8X 16	2	2						
5	1	26051-080002	NUT, M8	2	2						
6	1	26117-080254	BOLT M 8X 25 PLATED	2	2						
7	1	26347-080002	NUT, M8	2	2						

Fig.17. TRAVEL CLUCH

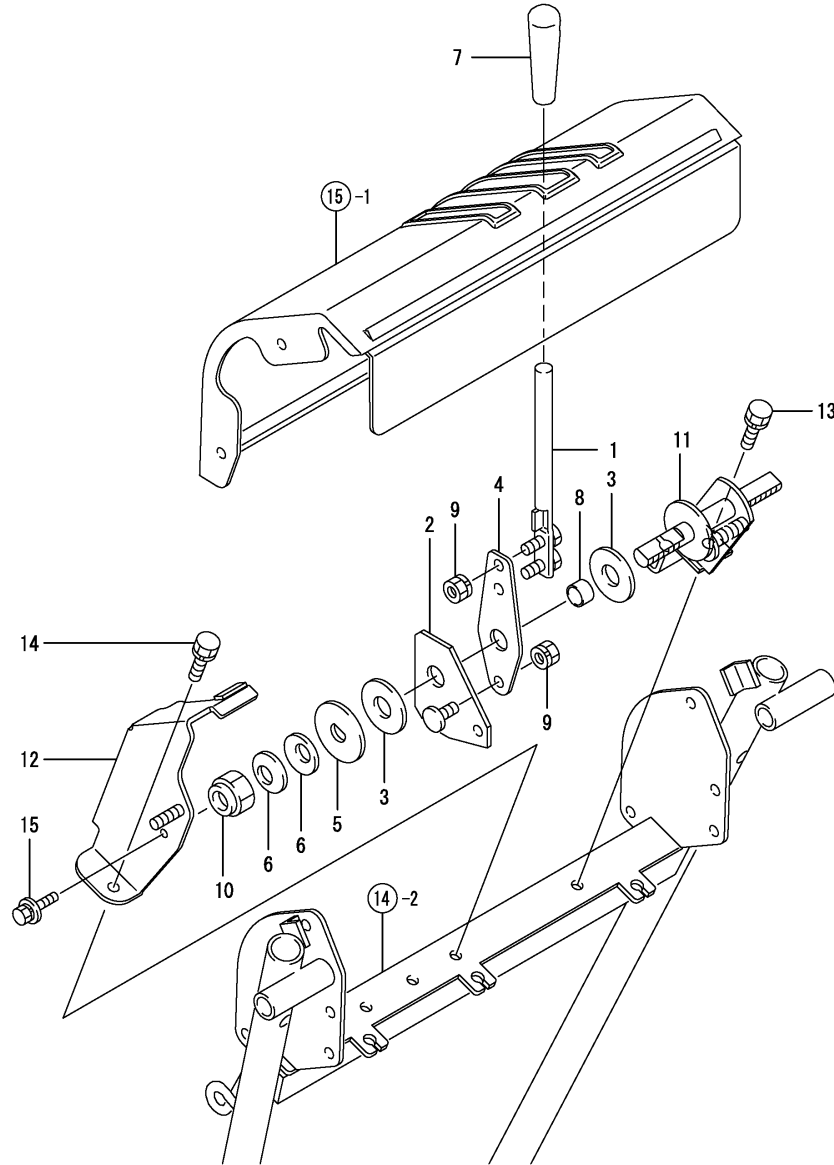


(A)=YSR7H-T
(B)=YSR7H-TS
(C)=

(D)=
(E)=
(F)=

No.	Lev.	Parts No.	Description	Q'ty						I	R
				(A)	(B)	(C)	(D)	(E)	(F)		
1	1	1J3999-07000	BAND 100B	3	3						
2	1	1N3330-31200	SHAFT,TRAVEL CLUTCH	1	1						
3	1	1N3300-31300	SHAFT,SNOW RMV.CLTCH	1	1						
4	1	1N3300-31450	SPRING 9X130	2	2						
5	1	1N3335-31600	TRAVELING WIRE	1	1						
6	1	1N3300-31651	WIRE,SNOW,REMOVING	1	1						
7	1	1N1710-32600	CLAMP 8X70	1	1						
8	1	1E6102-84970	BAND 140,WIRE LOCK	2	2						
9	1	22117-060000	WASHER, 6	2	2						
10	1	22117-100000	WASHER, 10	1	1						
11	1	22417-200100	COTTER PIN 2.0X10	2	2						
12	1	24550-012150	BUSH, 12X15	4	4						
13	1	1J3999-06000	BEARING 626-2NSL	1	1						
14	1	1N3330-31350	ARMCLUTCH LOCK SHAFT	1	1						
15	1	1N3300-31400	CATCH,LOCK CLAW	1	1						
16	1	1N3021-31451	CLAW,CLUTCH LOCK	1	1						
17	1	1N3021-31480	SPRING,LOCK CLAW	1	1						
18	1	1N3300-31500	GUIDE,LOCK CLAW	1	1						
19	1	1N3021-31580	BUSH 10X15,FLANGED	1	1						
20	1	1N3300-31700	LOCK,CLAW,BOSS(T	1	1						
20-1	1	1N3300-31700-1	SEAT, LOCK CLAW T	1	1						R
(A=F010266) (B=F010206)											
21	1	1C1011-45020	BUSH, 6X8X10	1	1						
22	1	22117-060000	WASHER, 6	1	1						
23	1	22117-060000	WASHER, 6	2	2						
24	1	22117-060000	WASHER, 6	1	1						
25	1	22117-080000	WASHER, 8	2	2						
26	1	22351-050020	PIN, SPRING 5.0X20	1	1						
27	1	22417-160100	COTTER PIN	1	1						
28	1	22417-160100	COTTER PIN	1	1						
29	1	22417-200160	PIN, COTTER 2.0X16	2	2						
30	1	26016-080164	BOLT M 8X 16	1	1						
31	1	26347-060002	NUT, M6	1	1						

Fig.18. CHANGE LEVER

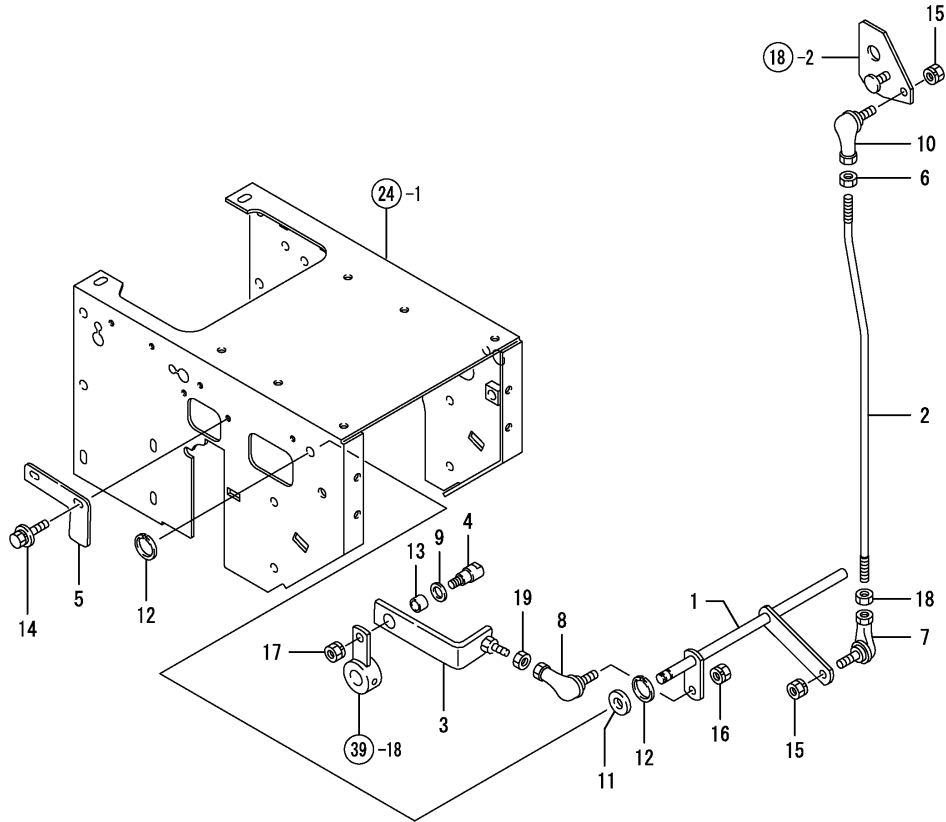


(A)=YSR7H-T
(B)=YSR7H-TS
(C)=

(D)=
(E)=
(F)=

No.	Lev.	Parts No.	Description	Q'ty						I	R
				(A)	(B)	(C)	(D)	(E)	(F)		
1	1	1N3360-32000	CHANGE LEVER	1	1						
2	1	1N3335-32050	ARM, CHANGE	1	1						
3	1	1N3330-32090	FRICTION PLATE	2	2						
4	1	1N3335-32090	SPRING,CHANGE LEVER	1	1						
4-1	1	1N3335-32090-1	SPRING, LEVER	1	1						R
		(A=F010266) (B=F010206)									
5	1	1N1723-32350	LOCK WASHER	1	1						
6	1	1C6320-64680	SPRING, H14	2	2						
7	1	1E6570-64760	GRIP, LEVER 12	1	1						
8	1	24550-014100	BUSH, 14X10	1	1						
9	1	26051-080002	NUT, M8	3	3						
10	1	26357-140002	NUT, M14	1	1						
10-1	1	26737-140002	NUT, M14	2	2						N
		(A=F010361) (B=F010259)									
11	1	1N3330-32100	FULCRUM, LEVER	1	1						
11-1	1	1N3330-32101	FULCRUM, LEVER	1	1						N
		(A=F010216) (B=F010156)									
12	1	1N3360-32400	CATCH,LEVER FULCRUM	1	1						
12-1	1	1N3360-32400-1	SUPPORT, FULCRUM	1	1						R
		(A=F010266) (B=F010206)									
13	1	26016-080164	BOLT M 8X 16	1	1						
14	1	26016-080164	BOLT M 8X 16	1	1						
15	1	26018-060162	BOLT, M6X 16	1	1						

Fig.19. CHANGE ROD



(A)=YSR7H-T
(B)=YSR7H-TS
(C)=

(D)=
(E)=
(F)=

No.	Lev.	Parts No.	Description	Q'ty						I	R
				(A)	(B)	(C)	(D)	(E)	(F)		
1	1	1N3335-32200	CHANG COUNTER	1	1						
2	1	1N3360-32200	ROD CHANGE LEVER	1	1						
3	1	1N3335-32300	CHANGE PLATE	1	1						
3-1	1	1N3335-32300-1 (A=F010266) (B=F010206)	PLATE, CHANGE	1	1						R
4	1	1N3335-32350	PIN,CHANGE STOPPER	1	1						
5	1	1N3021-32381	STOPPER,CHANGE	1	1						
5-1	1	1N3021-32381-1 (A=F010266) (B=F010206)	STOPPER,CHANGE	1	1						R
6	1	1N1570-32950	NUT 8	1	1						
7	1	1E4760-43090	BALL RBL8,LINK	1	1						
8	1	1E4760-43090	BALL RBL8,LINK	1	1						
9	1	1S6240-61430	LINER, 12X19X1	1	1						
10	1	1E6740-64200	BALL BL8DL, LINK	1	1						
11	1	22137-100000	WASHER, 10	1	1						
12	1	22292-000100	RING, S-10	2	2						
13	1	24550-012060	BUSH, 12X 6	1	1						
14	1	26018-060124	BOLT M 6X 12	2	2						
15	1	26051-080002	NUT, M8	2	2						
16	1	26051-080002	NUT, M8	1	1						
17	1	26051-080002	NUT, M8	1	1						
18	1	26717-080002	NUT, M8	1	1						
19	1	26717-080002	NUT, M8	1	1						

Fig.20. BYPASS LEVER

(A)=YSR7H-T
(B)=YSR7H-TS
(C)=

(D)=
(E)=
(F)=

No.	Lev.	Parts No.	Description	Q'ty						I	R
				(A)	(B)	(C)	(D)	(E)	(F)		
1	1	1J3999-02010	WASHER 6	2	2						
2	1	1N3021-33601	LEVER,BYPASS VALVE	1	1						
3	1	1C6560-92610	SPRING, 8	2	2						
4	1	22137-080000	WASHER, 8	1	1						
5	1	26117-060304	BOLT M 6X 30 PLATED	1	1						
6	1	26117-080252	BOLT M 8X 25 PLATED	1	1						
7	1	26347-060002	NUT, M6	1	1						
8	1	26347-080002	NUT, M8	1	1						
9	1	26347-080002	NUT, M8	1	1						

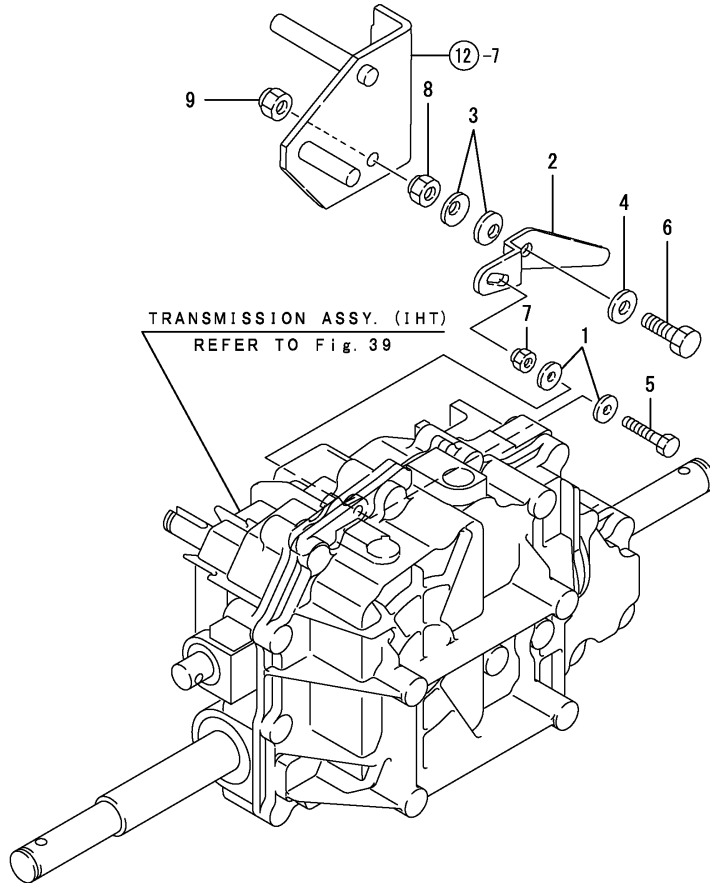


Fig.21. CHUTE LEVER

(A)=YSR7H-T
(B)=YSR7H-TS
(C)=

(D)=
(E)=
(F)=

No.	Lev.	Parts No.	Description	Q'ty						I	R
				(A)	(B)	(C)	(D)	(E)	(F)		
1	1	1J3999-07000	BAND 100B	2	2						
2	1	1N1723-32350	LOCK WASHER	1	1						
3	1	1N3330-34000	SHOOTER LEVER	1	1						
4	1	1N3300-34201	WIRE COMP.,SHOOT	1	1						
5	1	1A1140-58050	GRIP, STAND	1	1						
6	1	1E6680-64240	PLATE, FRICTION	2	2						
6-1	1	1N3331-34050	PLATE, FRICTION	2	2						N
		(A=F010266) (B=F010206)									
7	1	1C6320-64680	SPRING, H14	2	2						
8	1	22117-060000	WASHER, 6	2	2						
9	1	22417-200100	COTTER PIN 2.0X10	2	2						
10	1	26357-140002	NUT, M14	1	1						

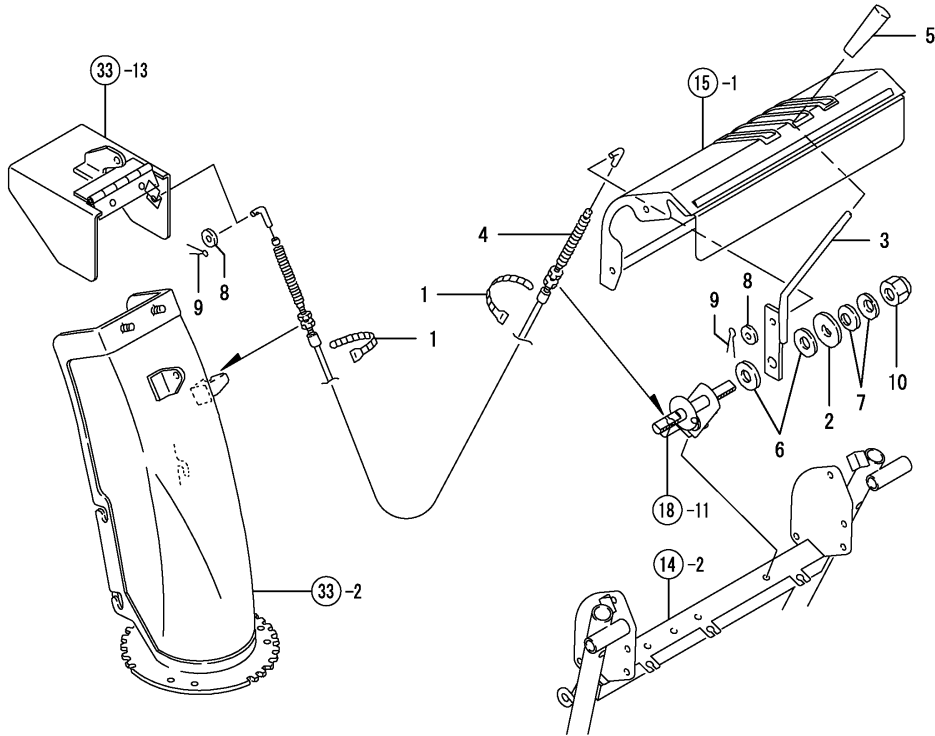
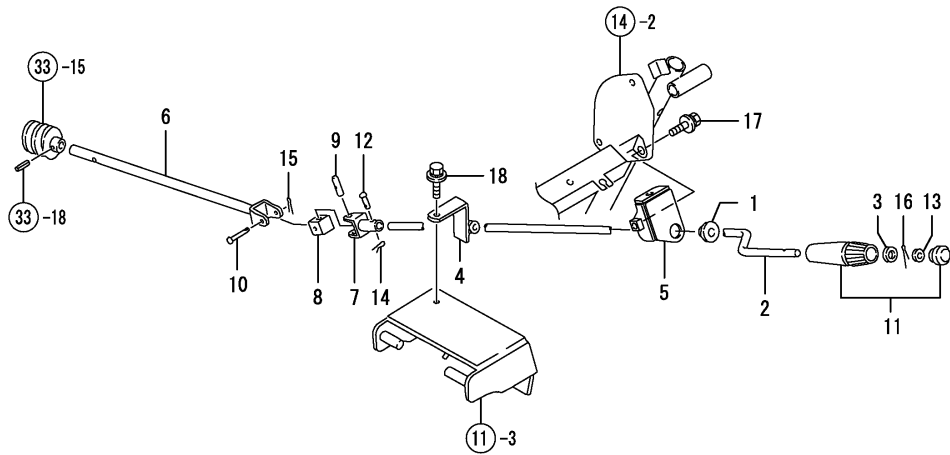


Fig.22. CHUTE HANDLE

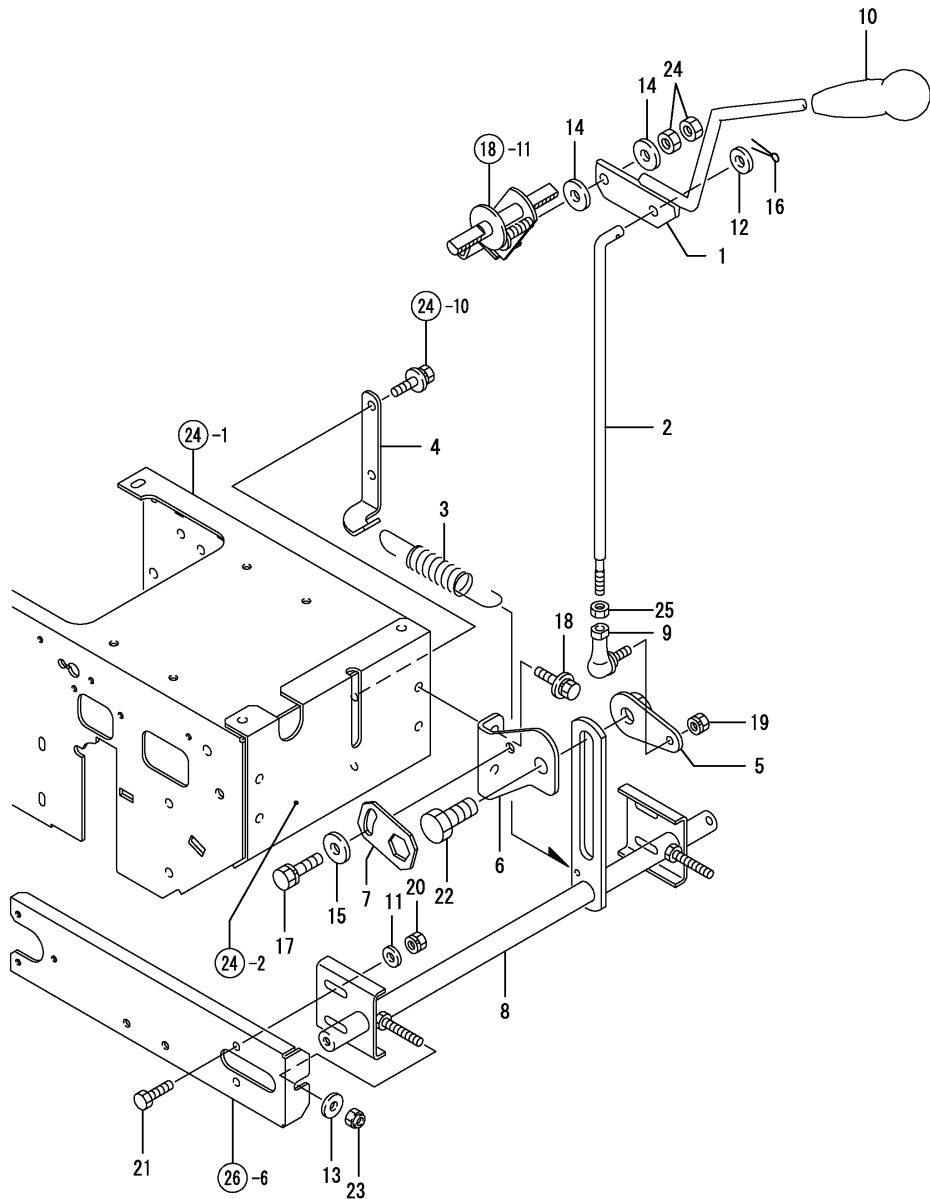


(A)=YSR7H-T
(B)=YSR7H-TS
(C)=

(D)=
(E)=
(F)=

No.	Lev.	Parts No.	Description	Q'ty						I	R
				(A)	(B)	(C)	(D)	(E)	(F)		
1	1	1N1711-32790	BUSH	1	1						
2	1	1N3330-34350	HANDLE,SHOOTER	1	1						
3	1	1N3021-34390	SPACER 10X14X1	1	1						
4	1	1N3330-34450	GUIDE,HANDLE	1	1						
4-1	1	1N3330-34450-1 (A=F010266) (B=F010206)	GUIDE,HANDLE	1	1						R
5	1	1N3300-34503	CATCH,SHOOTER HANDLE	1	1						
5-1	1	1N3300-34503-1 (A=F010266) (B=F010206)	CATCH,SHOOTER HANDLE	1	1						R
6	1	1N3330-34600	ROD,CONNECTING,SHOOT	1	1						
7	1	1N3330-34650	CONNECTING JOINT	1	1						
7-1	1	1N3330-34651 (A=F010266) (B=F010206)	JOINT, CONNECTING	1	1						N
8	1	1N3330-34700	JOINT FULCRUM	1	1						
9	1	1N3021-34710	JOINT FULCRUM,PIN 8	1	1						
10	1	1N3021-34720	RIVET 4X27.5	1	1						
11	1	1N1711-35520	GRIP,SHOOT	1	1						
12	1	1N3260-73250	RIVET 4X19.5	1	1						
13	1	22137-060000	WASHER, 6	1	1						
14	1	22372-040000	PIN, SNAP 4	1	1						
15	1	22417-200100	COTTER PIN 2.0X10	1	1						
16	1	22417-200160	PIN, COTTER 2.0X16	1	1						
17	1	26018-080164	BOLT M 8X 16	1	1						
18	1	26018-060124	BOLT M 6X 12	1	1						

Fig.23. LIFTING

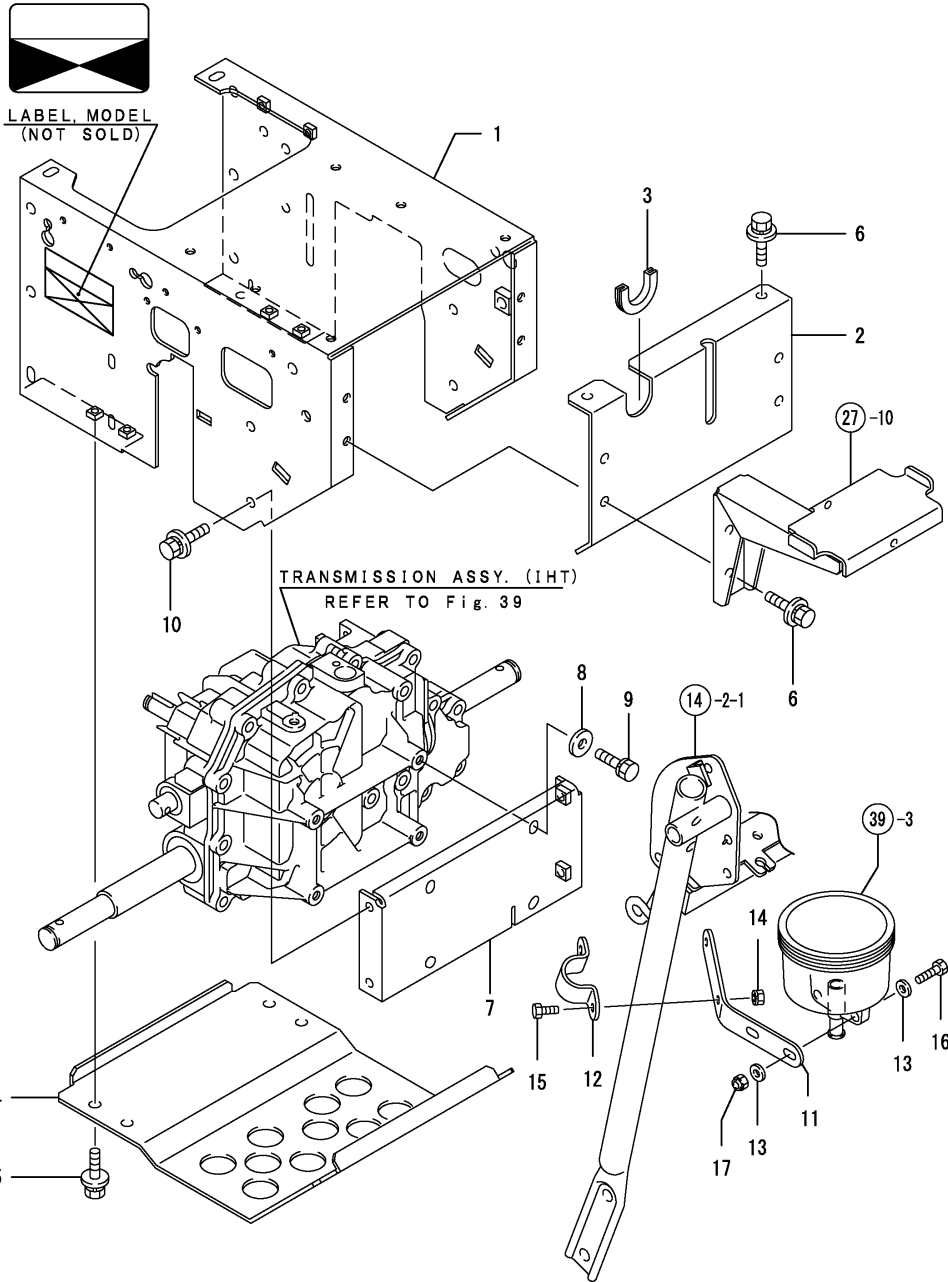


(A)=YSR7H-T
(B)=YSR7H-TS
(C)=

(D)=
(E)=
(F)=

No.	Lev.	Parts No.	Description	Q'ty						I	R
				(A)	(B)	(C)	(D)	(E)	(F)		
1	1	1N3330-35000	LEVER,AUGER ADJUSTG	1	1						
2	1	1N3360-35100	LIFTING ROD	1	1						
3	1	1N3360-35150	LIFT SPRING	1	1						
4	1	1N3360-35160	STAY(LIFT SPRING	1	1						
5	1	1N3330-35200	LOCK NUT,LIFTING	1	1						
6	1	1N3360-35300	CATCH,LIFTING	1	1						
7	1	1N3330-35400	PLATE,NUT	1	1						
8	1	1N3360-35500	SHAFT,IDLER	1	1						
9	1	1E4760-43090	BALL RBL8,LINK	1	1						
10	1	1A1040-58160	HANDLE, LEVER	1	1						
11	1	22137-080000	WASHER, 8	4	4						
12	1	22137-100000	WASHER, 10	1	1						
13	1	22157-080000	WASHER, 8	2	2						
14	1	22157-100000	WASHER, 10	2	2						
15	1	22157-100000	WASHER, 10	1	1						
16	1	22417-300200	PIN, COTTER 3.0X20	1	1						
17	1	26016-100252	BOLT M10X 25	1	1						
18	1	26018-080202	BOLT, M8X 20	2	2						
19	1	26051-080002	NUT, M8	1	1						
20	1	26051-080002	NUT, M8	4	4						
21	1	26116-080202	BOLT, M8X 20 PLATED	4	4						
22	1	26156-160352	BOLT, M16X 35 PLATED	1	1						
23	1	26347-080002	NUT, M8	2	2						
24	1	26717-100002	NUT, M10	2	2						
25	1	26717-080002	NUT, M8	1	1						

Fig.24. CHASSIS FRAME



(A)=YSR7H-T
(B)=YSR7H-TS
(C)=

(D)=
(E)=
(F)=

No.	Lev.	Parts No.	Description	Q'ty						I	R
				(A)	(B)	(C)	(D)	(E)	(F)		
1	1	1N3360-36000	CHASSIS	1	1						
1-1	1	1N3360-36000-1	CHASSIS,	1	1						R
		(A=F010266) (B=F010206)									
2	1	1N3335-36100	CHASSIS,REAR	1	1						
2-1	1	1N3335-36100-1	CHASSIS, REAR	1	1						R
		(A=F010266) (B=F010206)									
3	1	1N3021-36130	GROMMET	1	1						
4	1	1N3360-36200	CHASSIS BOTTOM	1	1						
4-1	1	1N3360-36200-1	CHASSIS, BOTTOM	1	1						R
		(A=F010266) (B=F010206)									
5	1	26018-080164	BOLT M 8X 16	6	6						
6	1	26018-080204	BOLT M 8X 20	4	4						
7	1	1N3021-36401	BRACKET,TRANSM.MTG.	1	1						
7-1	1	1N3021-36401-1	BRACKET,TRANSM.MTG.	1	1						R
		(A=F010266) (B=F010206)									
8	1	22157-080000	WASHER, 8	4	4						
9	1	26016-080202	BOLT, M8X 20	4	4						
10	1	26018-080202	BOLT, M8X 20	4	4						
11	1	1N3360-36600	STAY, TANK	1	1						W
11-1	1	1N3360-36600-1	STAY, TANK	1	1						R
		(A=F010216) (B=F010156)									
12	1	1N3360-36650	MOUNT, STAY	1	1						W
		(A=F010216) (B=F010156)									
12-1	1	1N3360-36650-1	MOUNT, STAY	1	1						R
		(A=F010266) (B=F010206)									
13	1	22137-060000	WASHER, 6	4	4						W
		(A=F010216) (B=F010156)									
14	1	26051-060002	NUT, M6	2	2						W
		(A=F010216) (B=F010156)									
15	1	26117-060162	BOLT M 6X 16 PLATED	2	2						W
		(A=F010216) (B=F010156)									
16	1	26117-060252	BOLT M 6X 25 PLATED	2	2						W
		(A=F010216) (B=F010156)									
17	1	26347-060002	NUT, M6	2	2						W
		(A=F010216) (B=F010156)									

Fig.25. BELT & GEAR COVER

(A)=YSR7H-T
(B)=YSR7H-TS
(C)=

(D)=
(E)=
(F)=

No.	Lev.	Parts No.	Description	Q'ty						I	R
				(A)	(B)	(C)	(D)	(E)	(F)		
1	1	7N3360-37000	COVER,BELT(EX,PL	1	1						
1-1	1	7N3360-37000-1	COVER,BELT(EX,PL	1	1						R
		(A=F010266) (B=F010206)									
2	1	26018-060124	BOLT M 6X 12	4	4						
3	1	1N3021-37150	COVER,CHANGE ROD	1	1						
3-1	1	1N3021-37150-1	COVER,CHANGE ROD	1	1						R
		(A=F010266) (B=F010206)									
4	1	26018-060124	BOLT M 6X 12	2	2						

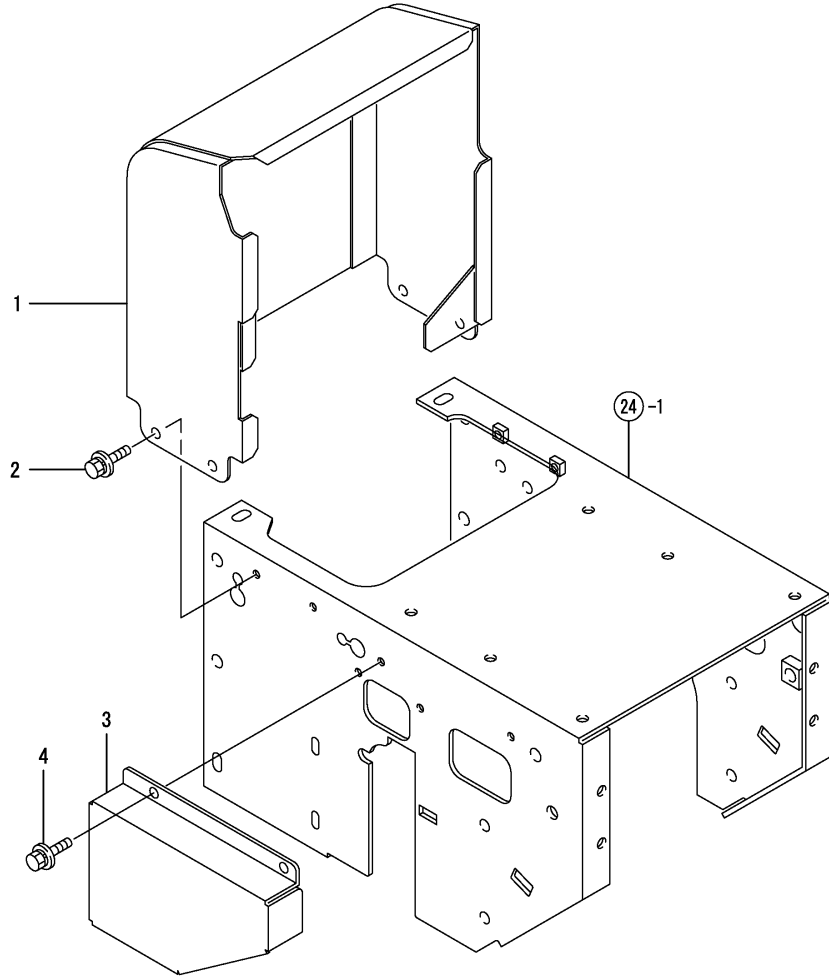


Fig.26. CRAWLER

(A)=YSR7H-T
(B)=YSR7H-TS
(C)=

(D)=
(E)=
(F)=

No.	Lev.	Parts No.	Description	Q'ty						I	R
				(A)	(B)	(C)	(D)	(E)	(F)		
1	1	1N3360-38000	CRAWLER	2	2						
2	1	1N3300-25100	JOINT 6004	2	2						
3	1	1N3021-38101	PIN,AXLE	2	2						
4	1	1N3021-38150	COLLAR 16X32X19	1	1						
5	1	1N3021-38170	WASHER,SEAL PROTECT.	2	2						
6	1	1N3360-38200	SIDE PLATE,CRAWLER L	1	1						
6-1	1	1N3360-38200-1	SIDE PLATE,CRAWLER L	1	1						R
		(A=F010266) (B=F010206)									
7	1	1N3360-38250	SIDE PLATE,CRAWLER R	1	1						
7-1	1	1N3360-38250-1	SIDE PLATE,CRAWLER R	1	1						R
		(A=F010266) (B=F010206)									
8	1	1N3021-38500	SPROCKET 11	2	2						
8-1	1	1N3021-38500-1	SPROCKET 11	2	2						R
		(A=F010266) (B=F010206)									
9	1	1N3021-38600	WHEEL	2	2						
9-1	1	1N3021-38600-1	WHEEL	2	2						R
		(A=F010266) (B=F010206)									
10	1	22137-200000	WASHER, 20	2	2						
11	1	22157-080000	WASHER, 8	2	2						
12	1	22217-080000	WASHER, SPRING 8	2	2						
13	1	22292-000200	RING, S-20	2	2						
14	1	22417-200120	COTTER PIN 2.0X12	2	2						
15	1	24104-060044	BEARING, BALL 6004UU	2	2						
16	1	24550-020100	BUSH, 20X10	4	4						
17	1	26016-060124	BOLT 6X12 W/L.W.	6	6						
18	1	26116-080252	BOLT, M8X 25 PLATED	2	2						
19	1	1N3330-38500	GUIDE,CRAWLER	2	2						
19-1	1	1N3330-38500-1	GUIDE, CRAWLER	2	2						R
		(A=F010266) (B=F010206)									
20	1	26016-080202	BOLT, M8X 20	4	4						

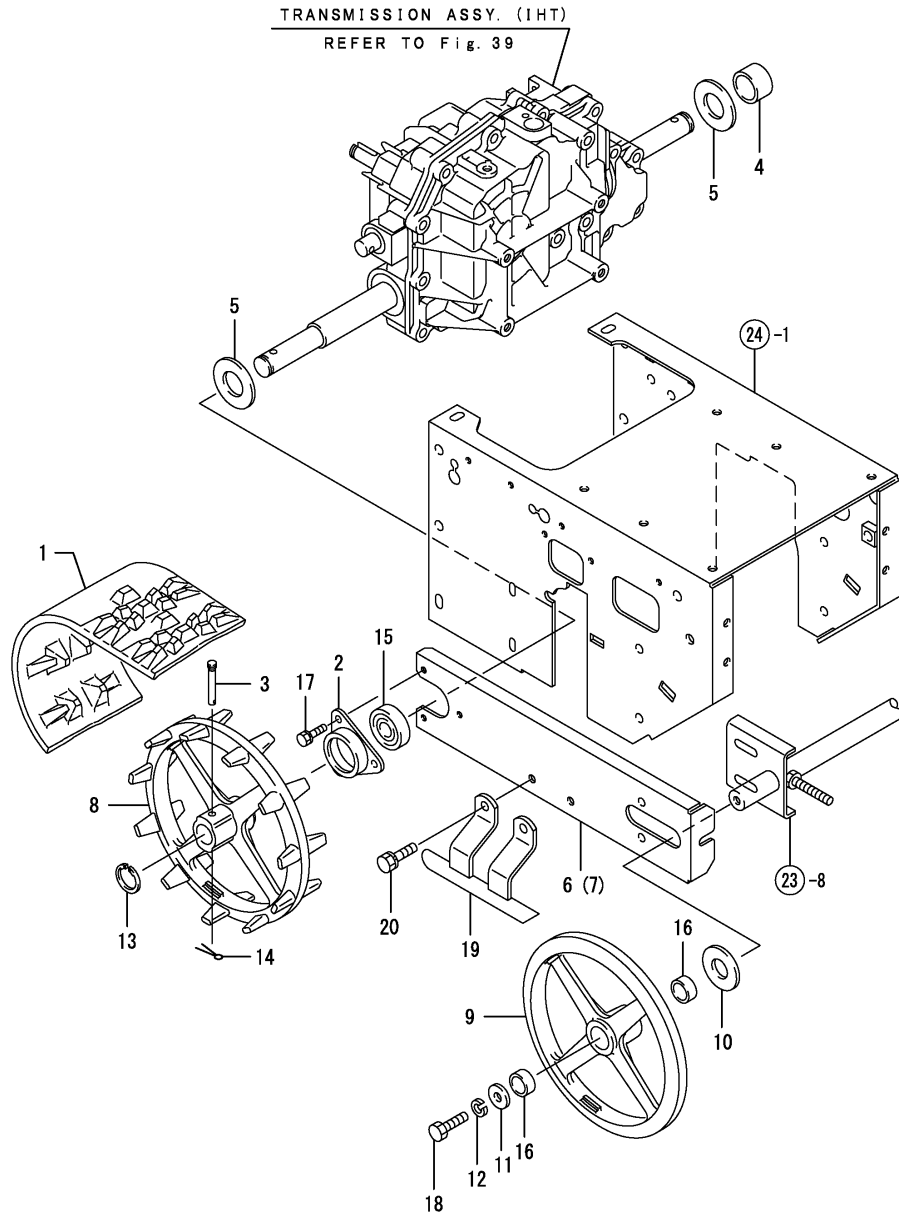
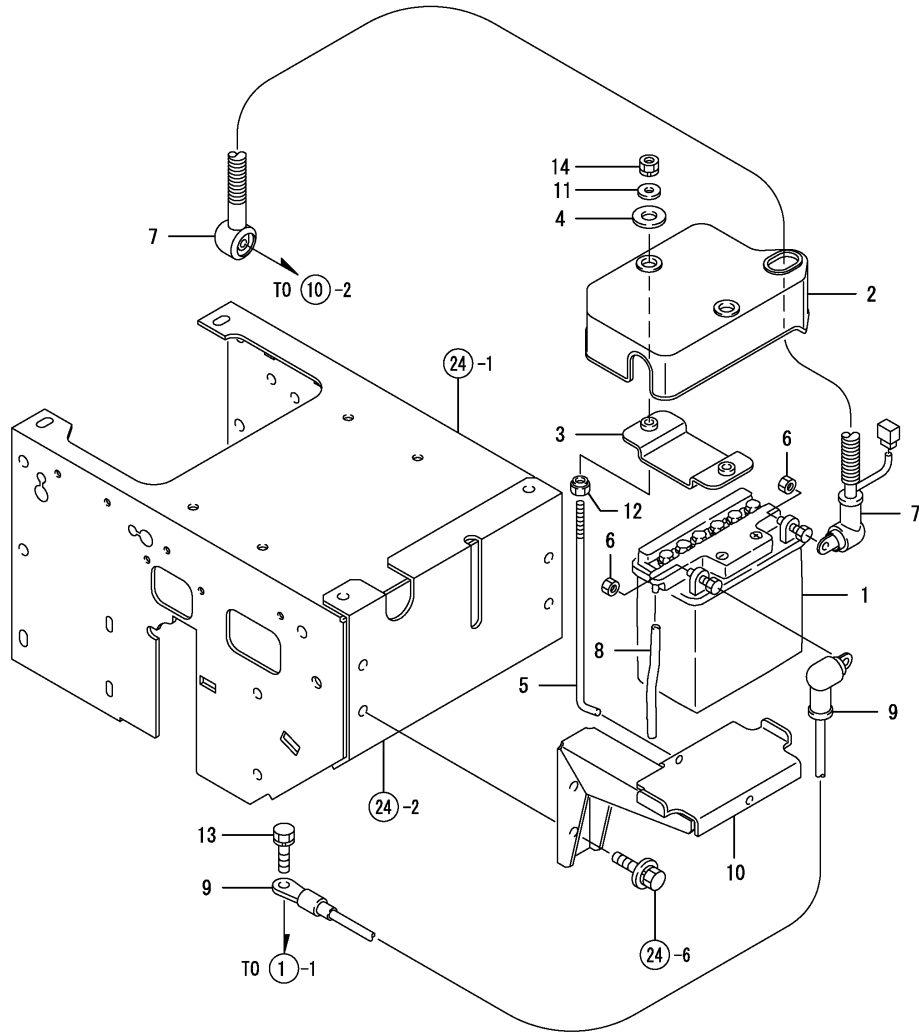


Fig.27. BATTERY

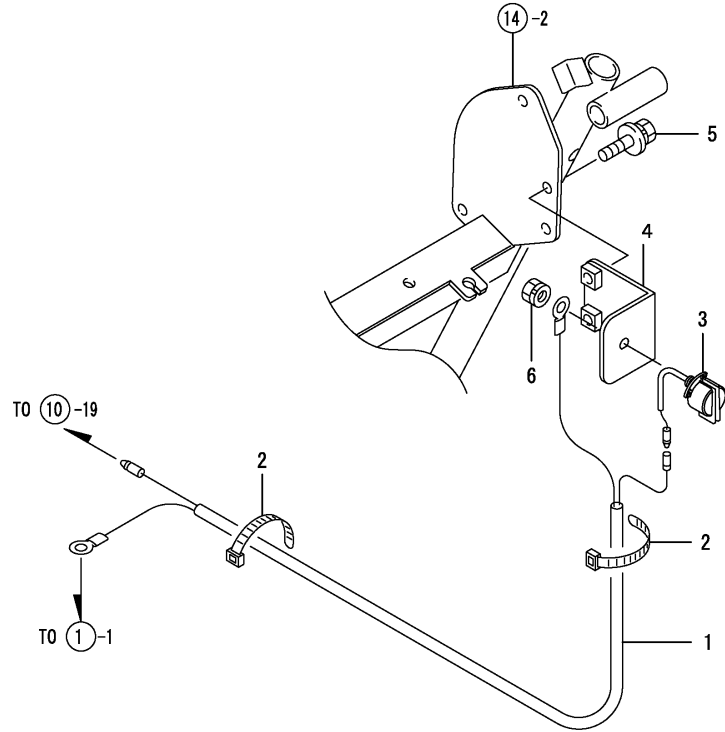


(A)=YSR7H-T
(B)=YSR7H-TS
(C)=

(D)=
(E)=
(F)=

No.	Lev.	Parts No.	Description	Q'ty						I	R
				(A)	(B)	(C)	(D)	(E)	(F)		
1	1	1N3300-51010	BATTERY YB12AL-A		1						
2	1	1N3360-51100	COVER,BATTERY		1						
3	1	1N3360-51150	PLATE,KEEP,BATTERY		1						
3-1	1	1N3360-51150-1 (B=F010206)	RETAINER, BATTERY		1						R
4	1	1N3360-51170	RUBBER,KEEP,BATTERY		2						
5	1	1N3360-51200	SHAFT,KEEP,BATTERY		2						
6	1	1N3360-51210	NUT 6X7		2						
7	1	1N3360-51300	CABLE,BATTERY(+)		1						
8	1	1N1710-51350	PIPE,VINYL		1						
9	1	1N3360-51350	CABLE,BATTERY(-)		1						
10	1	1N3360-51500	BATTERY STAND		1						
10-1	1	1N3360-51500-1 (B=F010206)	BATTERY STAND		1						R
11	1	22157-060000	WASHER, 6		2						
12	1	26347-060002	NUT, M6		2						
13	1	26016-080164	BOLT M 8X 16		1						
14	1	26051-060002	NUT, M6		2						

Fig.28. HARNESS & SWITCH

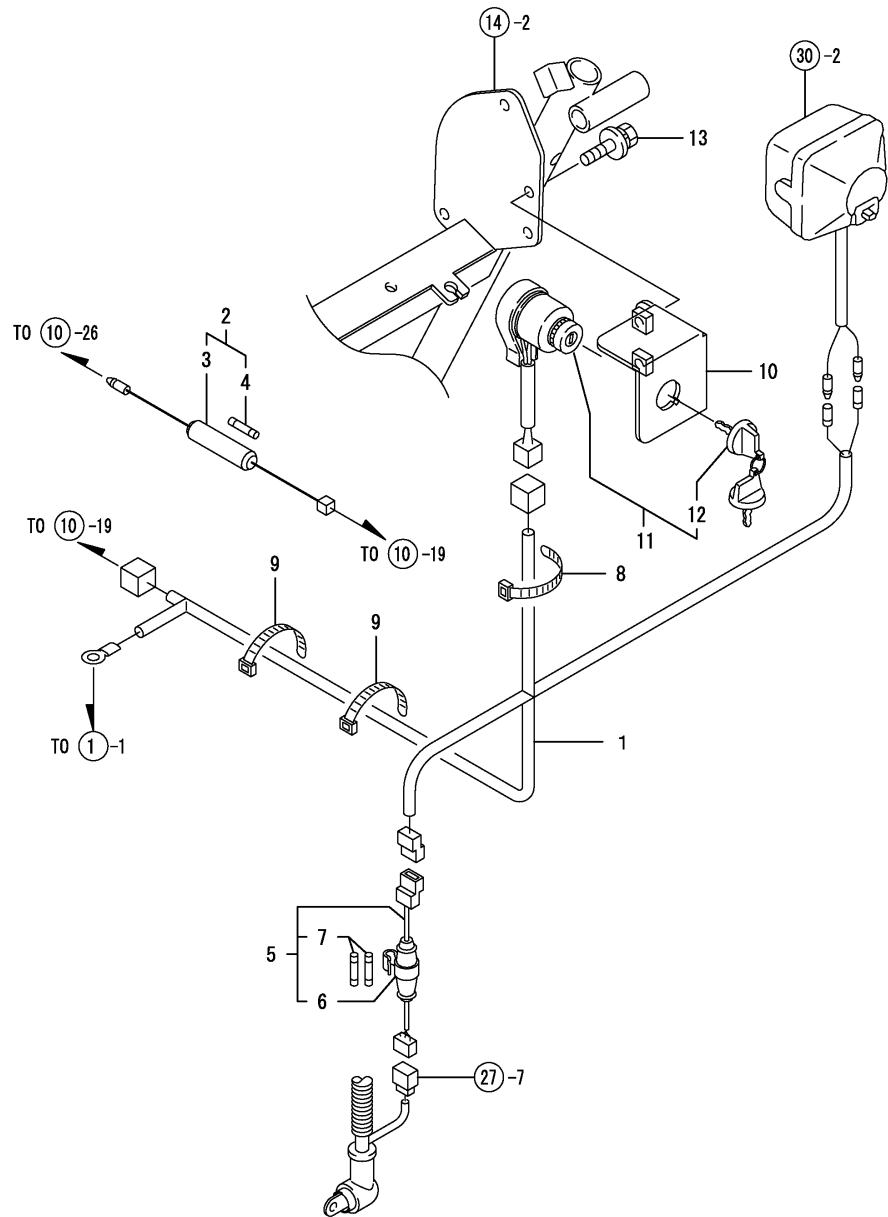


(A)=YSR7H-T
(B)=YSR7H-TS
(C)=

(D)=
(E)=
(F)=

No.	Lev.	Parts No.	Description	Q'ty						I	R
				(A)	(B)	(C)	(D)	(E)	(F)		
1	1	1N3300-51400	HARNESS (T	1							
2	1	1E6102-84970	BAND 140,WIRE LOCK	2							
3	1	1A1470-40900	SWITCH,STOP	1							
4	1	1N3300-51451	SEAT,SWICH T	1							
4-1	1	1N3300-51451-1	SEAT,SWICH T	1							R
			(A=F010266)								
5	1	26018-080164	BOLT M 8X 16	2							
6	1	26051-080002	NUT, M8	1							

Fig.29. HARNESS & SWITCH

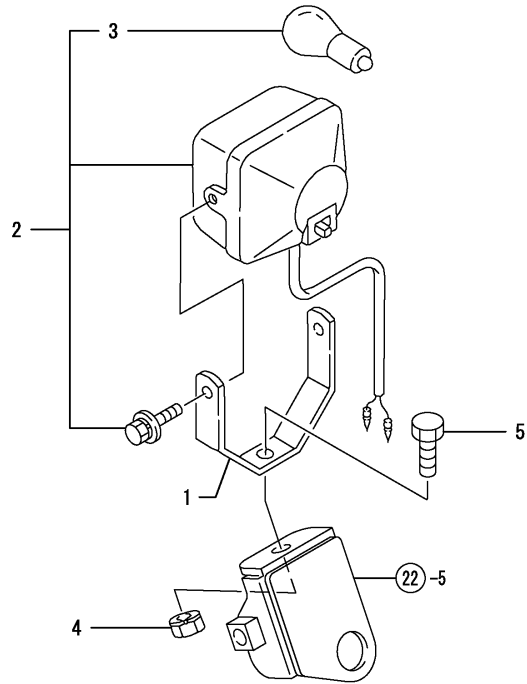


(A)=YSR7H-T
(B)=YSR7H-TS
(C)=

(D)=
(E)=
(F)=

No.	Lev.	Parts No.	Description	Q'ty						I	R
				(A)	(B)	(C)	(D)	(E)	(F)		
1	1	1N3360-51410	HARNESS TS		1						
2	1	1N3330-51450	HARNESS,FUSE ASY		1						
3	2	1N3330-51460	HARNESS,FUSE		1						
4	2	29411-050000	FUSE, CARTRIDGE 5A		1						
5	1	1N3021-51550	HOLDER ASSY.,FUSE		1						
6	2	1N3021-51560	HOLDER, FUSE		1						
7	2	29411-200000	FUSE, CARTRIDGE 20A		2						
8	1	1E6102-84960	BAND 250,WIRE LOCK		1						
9	1	1E6102-84970	BAND 140,WIRE LOCK		3						
10	1	1N3300-51551	SEAT,SWICH (TS		1						
10-1	1	1N3300-51552-1 (B=F010206)			1						R
11	1	1N3021-52300	SWITCH ASSY.,KEY		1						
12	2	160797-77270	KEY, REVERSE		1						
13	1	26018-080164	BOLT M 8X 16		2						

Fig.30. LAMP

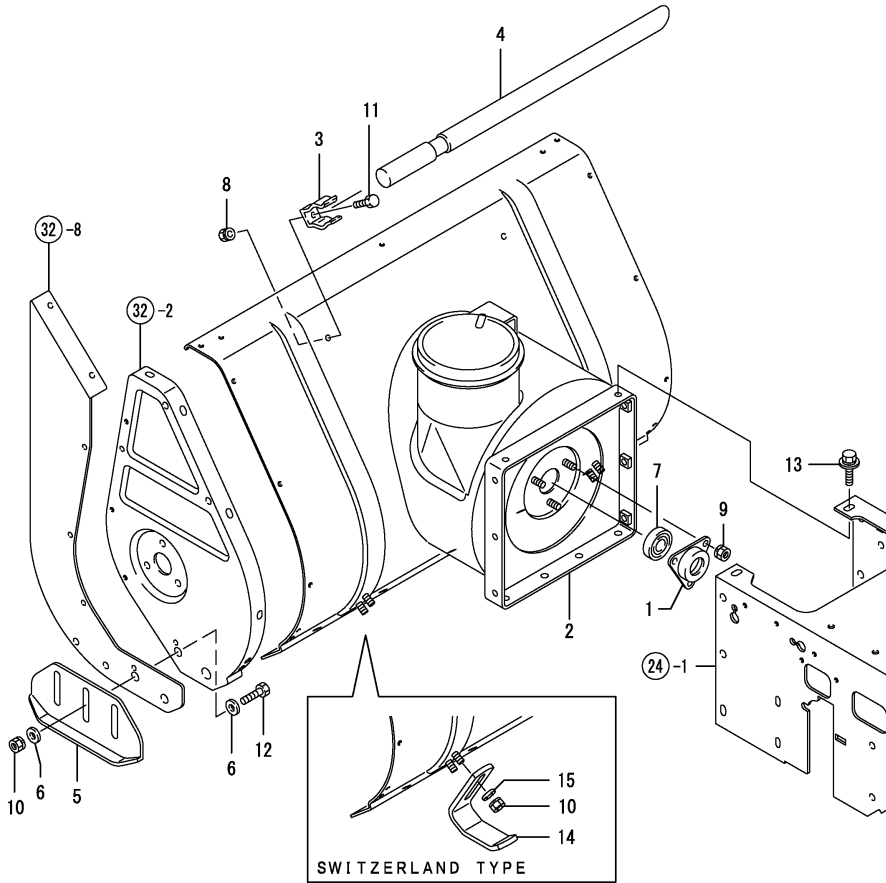


(A)=YSR7H-T
(B)=YSR7H-TS
(C)=

(D)=
(E)=
(F)=

No.	Lev.	Parts No.	Description	Q'ty						I	R
				(A)	(B)	(C)	(D)	(E)	(F)		
1	1	1N1711-51390	STAY,HEADLIGHT	1	1						
2	1	1N1711-51850	HEADLIGHT COMPL.	1	1						
3	2	1N1711-51860	LAMP 12V-15W G23	1	1						
4	1	26051-080002	NUT, M8	1	1						
5	1	26117-080162	BOLT M 8X 16 PLATED	1	1						

Fig.31. SNOW REMOVING FRAME



(A)=YSR7H-T
(B)=YSR7H-TS
(C)=

(D)=
(E)=
(F)=

No.	Lev.	Parts No.	Description	Q'ty						I	R
				(A)	(B)	(C)	(D)	(E)	(F)		
1	1	1N1570-38210	BEARING 6203B	1	1						
2	1	1N3360-71000	FRAME,SNOW REMOVING	1	1						
3	1	1N1710-71062	STOPPER	2	2						
4	1	1N1710-71071	ROD,SNOW SHOVELING	1	1						
4-1	1	1N1710-71072	ROD,SNOW SHOVELING	1	1						R
		(A=FXXXXXXX) (B=FXXXXXXX)									
5	1	1N3300-71401	SHOE	2	2						2
5-1	1	1N3300-71401-1	SHOE	2	2						R 2
		(A=F010266) (B=F010206)									
6	1	22137-080000	WASHER, 8	8	8						2
7	1	24104-062034	BEARING, BALL 6203UU	1	1						
8	1	26051-060002	NUT, M6	2	2						
9	1	26051-080002	NUT, M8	3	3						
10	1	26051-080002	NUT, M8	4	4						
11	1	26117-060122	BOLT M 6X 12 PLATED	2	2						
12	1	26117-080202	BOLT M 8X 20 PLATED	4	4						2
13	1	26018-080162	BOLT, M8X 16	8	8						
14	1	1N3330-71400-1	SLED,	2	2						1
15	1	22137-080000	WASHER, 8	4	4						1

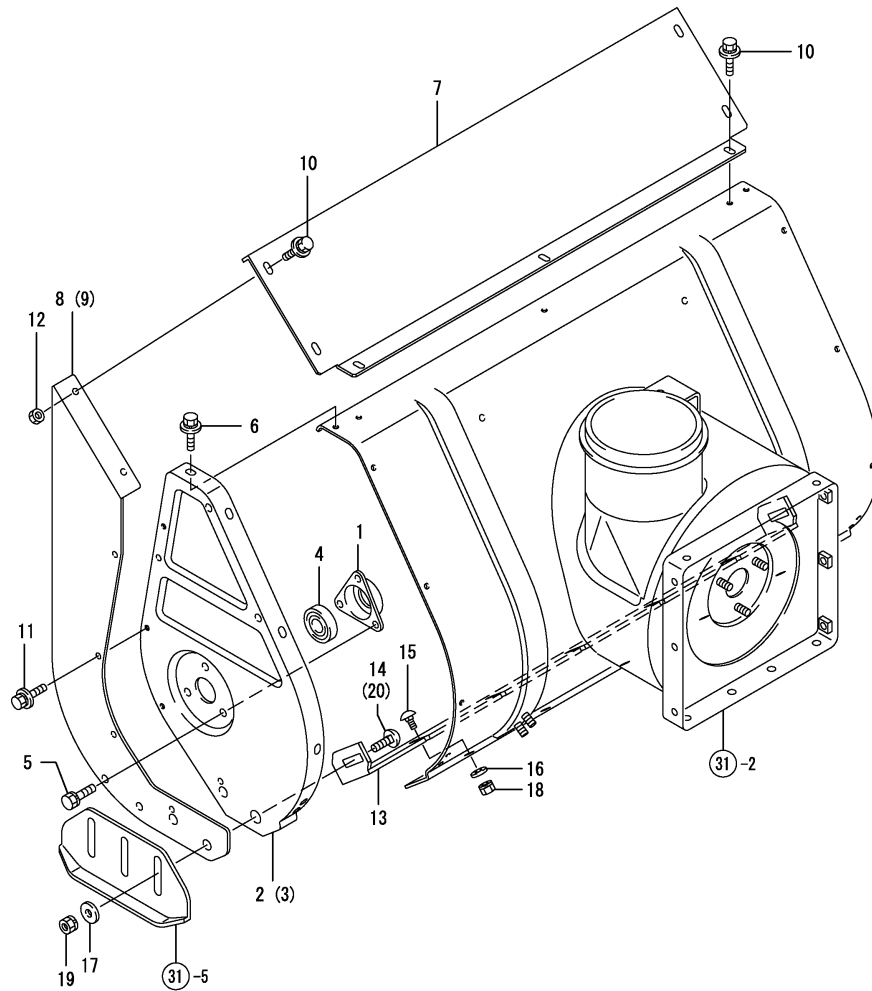
Remarks

- (1) FOR TYPE SWITZERLAND
- (2) NOT USED FOR SWITZERLAND TYPE

Fig.32. AUGER COVER

(A)=YSR7H-T
(B)=YSR7H-TS
(C)=

(D)=
(E)=
(F)=

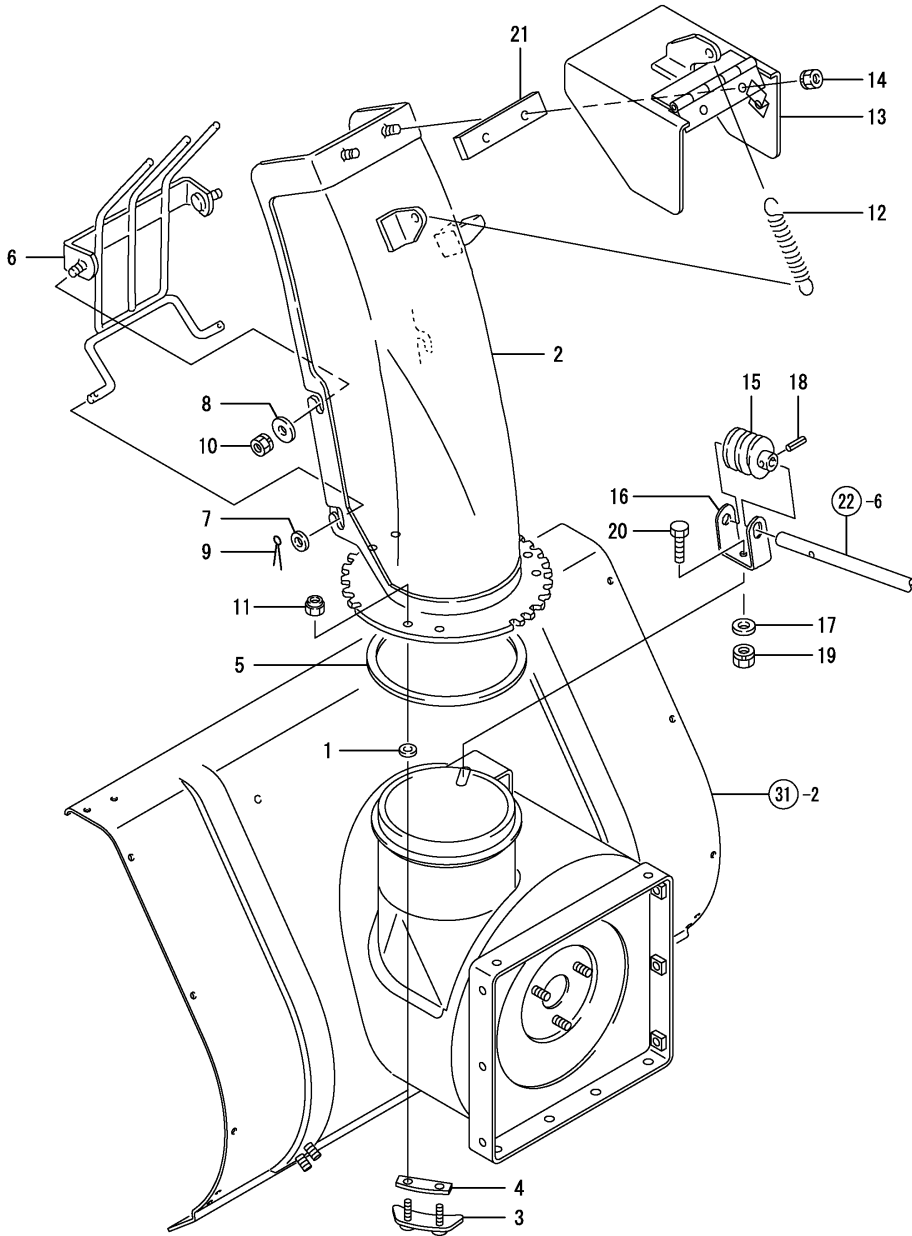


No.	Lev.	Parts No.	Description	Q'ty						I	R
				(A)	(B)	(C)	(D)	(E)	(F)		
1	1	1N1570-38200	BEARING 6203C	2	2						
2	1	1N3310-71200	PLATE L,AUGER SIDE	1	1						
3	1	7N3310-71250	PL.AS.,AUGER SD.PL.R	1	1						
4	1	24104-062034	BEARING, BALL 6203UU	2	2						
5	1	26016-080164	BOLT M 8X 16	6	6						
6	1	26018-060124	BOLT M 6X 12	12	12						
7	1	1N3360-71500	CASE COVER,AUGER	1	1						
7-1	1	1N3360-71500-1	COVER, AUGER CASE	1	1						R
		(A=F010266) (B=F010206)									
8	1	1N3360-71550	SIDE COVER,AUGER L	1	1						
9	1	1N3360-71560	SIDE COVER,AUGER R	1	1						
10	1	26018-060124	BOLT M 6X 12	7	7						
11	1	26018-060124	BOLT M 6X 12	6	6						
12	1	26717-060002	NUT, M6	4	4						
13	1	1N3310-71301	PLATE,BOTTOM(650	1	1						
13-1	1	1N3310-71301-1	PLATE,BOTTOM(650	1	1						R
		(A=F010266) (B=F010206)									
14	1	1N3300-71330	BOLT	2	2						2
15	1	1N3300-71320	BOLT	5	5						
16	1	22137-060000	WASHER, 6	5	5						
17	1	22157-080000	WASHER, 8	2	2						
18	1	26051-060002	NUT, M6	5	5						
19	1	26051-080002	NUT, M8	2	2						
20	1	1N3020-71320	BOLT, 8X20	2	2						1

Remarks

- (1) FOR TYPE SWITZERLAND
- (2) NOT USED FOR SWITZERLAND TYPE

Fig.33. CHUTE



(A)=YSR7H-T
(B)=YSR7H-TS
(C)=

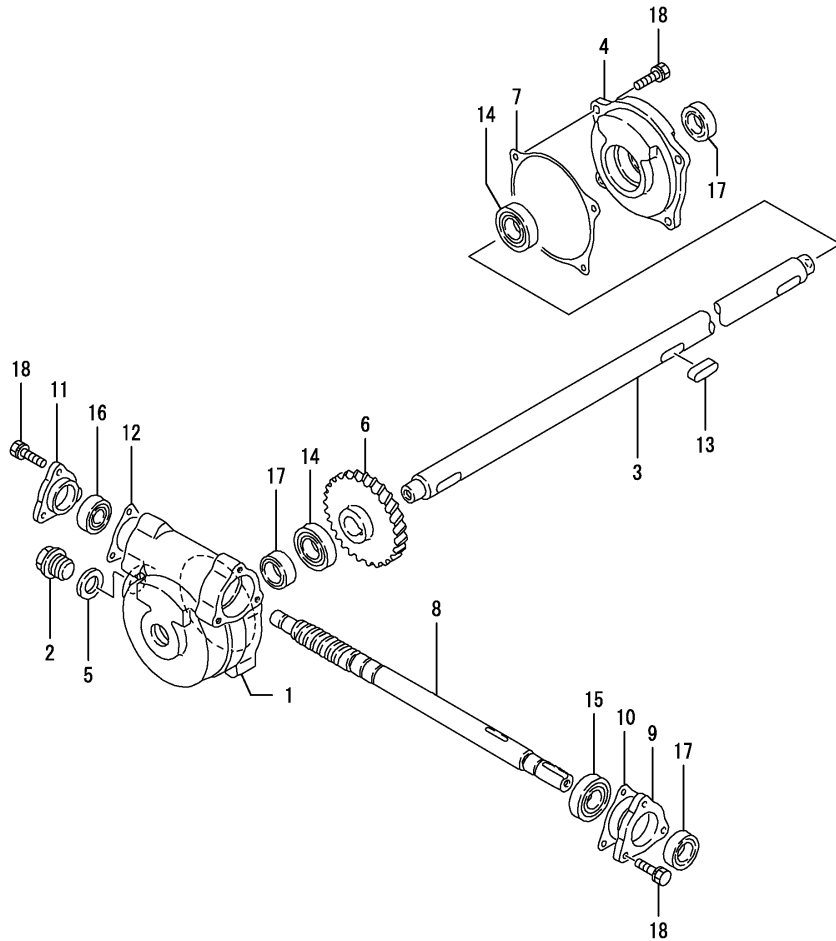
(D)=
(E)=
(F)=

No.	Lev.	Parts No.	Description	Q'ty						I	R
				(A)	(B)	(C)	(D)	(E)	(F)		
1	1	1J3999-02160	WASHER	6	6						
2	1	7N3300-73000	PL.ASSY.,SHOOT.9W	1	1						
3	1	1N3021-73201	FIXTURE A,SHOOTER	3	3						
4	1	1N1711-73240	SPACER	3	3						
5	1	1N1711-73280	PLATE,FLOOR	1	1						
6	1	1N1960-73502	GUARD	1	1						
7	1	22137-060000	WASHER, 6	2	2						
8	1	22157-060000	WASHER, 6	2	2						
9	1	22417-200120	COTTER PIN 2.0X12	2	2						
10	1	26051-060002	NUT, M6	2	2						
11	1	26347-060002	NUT, M6	6	6						
12	1	1N1570-73150	SPRING,CHUTE	1	1						
13	1	1N3300-73201	SHOOTER DEFLECTOR	1	1						
13-1	1	1N3300-73202-1	DEFLECTOR, CHUTE 9W	1	1						R
		(A=F010266) (B=F010206)									
14	1	26051-060002	NUT, M6	2	2						
15	1	1N3330-73300	WORM	1	1						
16	1	1N3330-73350	BEARING,WORM	1	1						
17	1	22137-080000	WASHER, 8	1	1						
18	1	22351-060020	PIN, SPRING 6.0X20	1	1						
19	1	26051-080002	NUT, M8	1	1						
20	1	26117-080162	BOLT M 8X 16 PLATED	1	1						
21	1	1N1711-73170	RUBBER,SNOW PROTECT.	1	1						W
		(A=F010216) (B=F010156)									

Fig.34. GEAR CASE

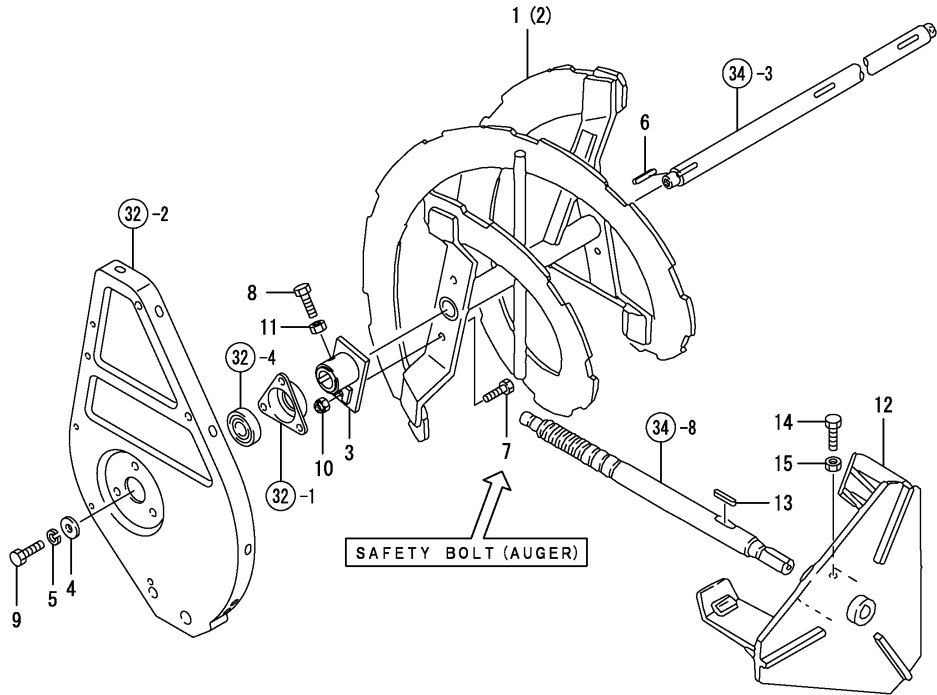
(A)=YSR7H-T
(B)=YSR7H-TS
(C)=

(D)=
(E)=
(F)=



No.	Lev.	Parts No.	Description	Q'ty						I	R
				(A)	(B)	(C)	(D)	(E)	(F)		
1	1	1N1710-74002	CASE,GEAR	1	1						
1-1	1	1N1710-74002-1	CASE,GEAR	1	1						R
		(A=F010266) (B=F010206)									
2	1	1N1711-74000	BOLT,DRAIN	1	1						
3	1	1N1720-74000	SHAFT,AUGER	1	1						
4	1	1N1710-74012	COVER C,SNAP-IN	1	1						
4-1	1	1N1710-74012-1	COVER C,SNAP-IN	1	1						R
		(A=F010266) (B=F010206)									
5	1	1N1711-74010	PACKING 20X28X2,CU	1	1						
6	1	1N1710-74021	WHEEL,WORM	1	1						
7	1	1N1570-74050	PACKING C	1	1						
8	1	1N1570-74101	SHAFT,WORM	1	1						
8-1	1	1N1570-74101-1	SHAFT,WORM	1	1						R
		(A=F010266) (B=F010206)									
9	1	1N1570-74110	COVER A,KEEP	1	1						
9-1	1	1N1570-74110-1	COVER A,KEEP	1	1						R
		(A=F010266) (B=F010206)									
10	1	1N1570-74120	PACKING A	1	1						
11	1	1N1570-74130	COVER B,KEEP	1	1						
11-1	1	1N1570-74130-1	COVER B,KEEP	1	1						R
		(A=F010266) (B=F010206)									
12	1	1N1570-74140	PACKING B	1	1						
13	1	22512-050300	KEY, 5X 30	1	1						
14	1	24101-060044	BEARING, BALL 6004	2	2						
15	1	24107-060044	BEARING, BALL 6004ZZ	1	1						
16	1	24107-062024	BEARING, BALL 6202ZZ	1	1						
17	1	24421-203508	SEAL, OIL TC203508	3	3						
18	1	26016-060202	BOLT, M6X 20	10	10						

Fig.35. AUGER & BLOWER

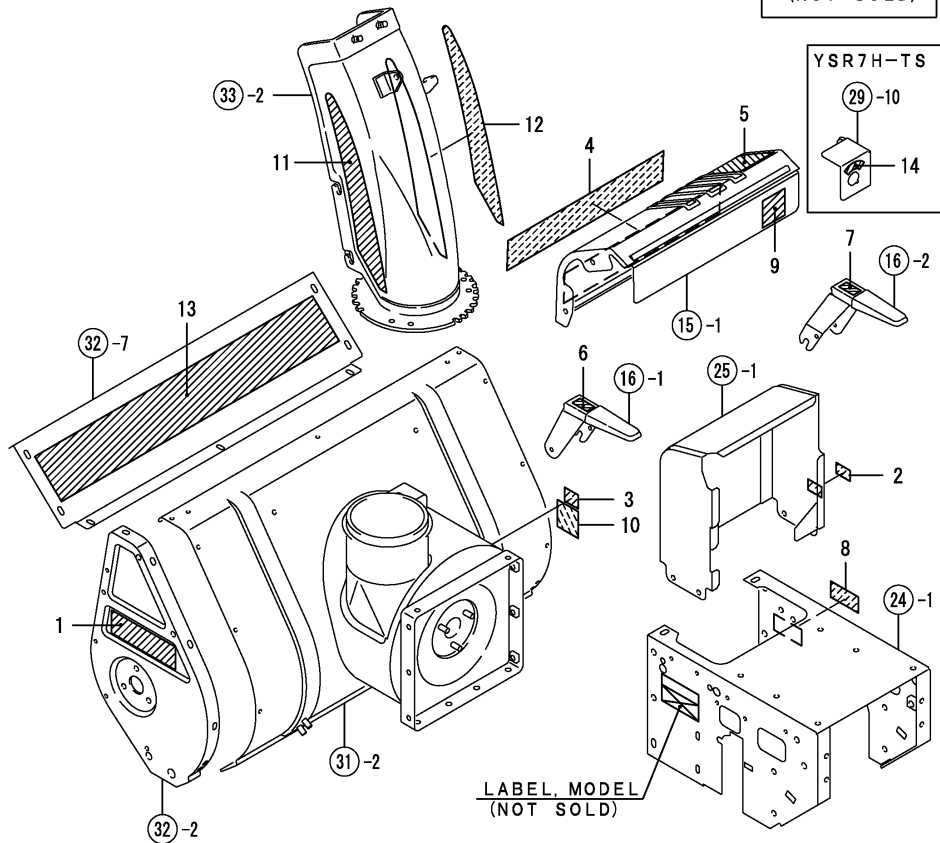
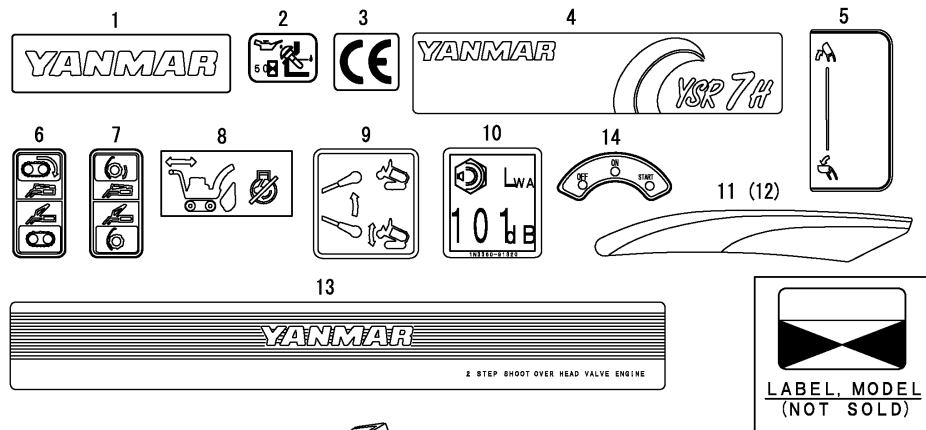


(A)=YSR7H-T
(B)=YSR7H-TS
(C)=

(D)=
(E)=
(F)=

No.	Lev.	Parts No.	Description	Q'ty						I	R
				(A)	(B)	(C)	(D)	(E)	(F)		
1	1	1N3330-75000	AUGER L	1	1						
1-1	1	1N3330-75000-1	AUGER L	1	1						R
		(A=F010266) (B=F010206)									
2	1	1N3330-75100	AUGER R	1	1						
2-1	1	1N3330-75100-1	AUGER R	1	1						R
		(A=F010266) (B=F010206)									
3	1	1N3330-75200	FLANGE,AUGER	2	2						
3-1	1	1N3330-75200-1	FLANGE,AUGER	2	2						R
		(A=F010266) (B=F010206)									
4	1	22157-080000	WASHER, 8	2	2						
5	1	22217-080000	WASHER, SPRING 8	2	2						
6	1	22512-050300	KEY, 5X 30	2	2						
7	1	26116-060202	BOLT, M6X 20 PLATED	2	2						
8	1	26116-080162	BOLT, M8X 16 PLATED	2	2						
9	1	26116-080252	BOLT, M8X 25 PLATED	2	2						
10	1	26347-060002	NUT, M6	2	2						
11	1	26717-080002	NUT, M8	2	2						
12	1	1N1711-76001	BLOWER COMPL.	1	1						
12-1	1	1N1711-76001-1	BLOWER COMPL.	1	1						R
		(A=F010266) (B=F010206)									
13	1	22512-050300	KEY, 5X 30	1	1						
14	1	26116-080202	BOLT, M8X 20 PLATED	1	1						
15	1	26717-080002	NUT, M8	1	1						

Fig.36. LABELS

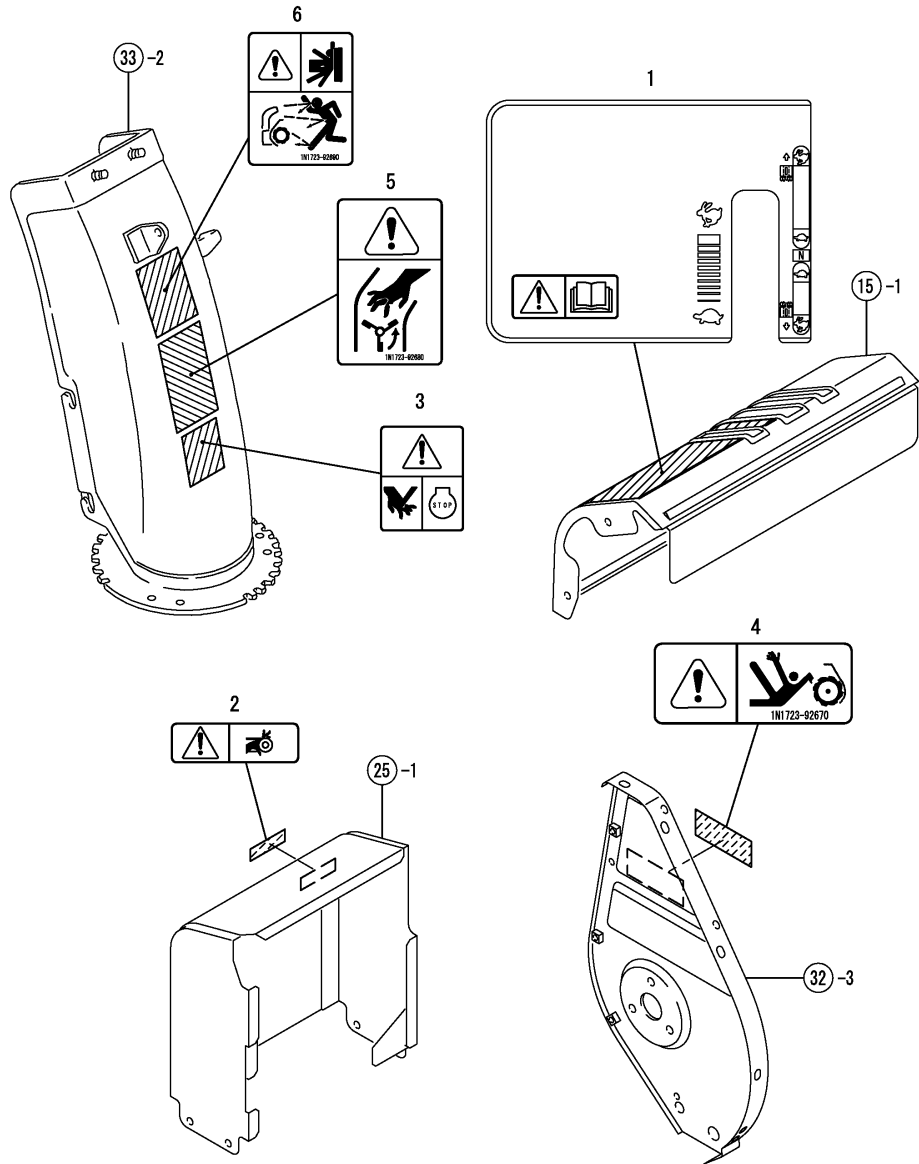


(A)=YSR7H-T
(B)=YSR7H-TS
(C)=

(D)=
(E)=
(F)=

No.	Lev.	Parts No.	Description	Q'ty						I	R
				(A)	(B)	(C)	(D)	(E)	(F)		
1	1	1N1711-68190	MARK C YANMAR	2	2						
2	1	1N1711-68220	MARK,OIL CHECK	1	1						
3	1	1E1061-86610	MARK CE	1	1						
4	1	1N3360-91050	MARK,MODEL	1	1						
5	1	1N3360-91080	LABEL,CONTROL	1	1						
6	1	1N3021-91100	MARK,TRAVEL CLUTCH	1	1						
7	1	1N3021-91110	MARK,SNOW REM.CLUTCH	1	1						
8	1	1N3021-91250	LABEL,NEUTRAL VALVE	1	1						
9	1	1N3360-91300	LABEL,LIFT LEVER	1	1						
10	1	1N3360-91320	LABEL,SOUND LABEL	1	1						
11	1	1N3330-91400	MARK L,STRIPE	1	1						
12	1	1N3330-91410	MARK R,STRIPE	1	1						
13	1	1N1723-92530	MARK YANMAR	1	1						
14	1	1N3021-91090	MARK,SWITCH		1						

Fig.37. LABELS(SAFETY)



(A)=YSR7H-T
(B)=YSR7H-TS
(C)=

(D)=
(E)=
(F)=

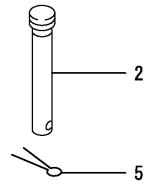
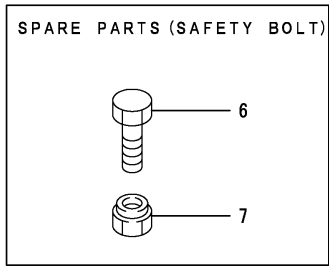
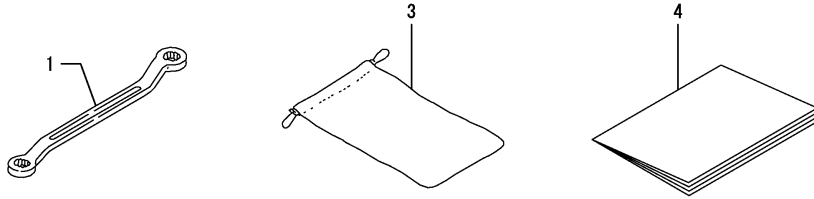
No.	Lev.	Parts No.	Description	Q'ty						I	R
				(A)	(B)	(C)	(D)	(E)	(F)		
1	1	1N3360-91070		1	1						
2	1	1W4909-92310	CAUTION,BELT,COVWR	1	1						
3	1	1W4909-92360	CAUTION,ENGINE,STOP	1	1						
4	1	1N1723-92670	DANGER,SNW.REMV.UNIT	1	1						
5	1	1N1723-92680	WARNING,SHOOTER	1	1						
6	1	1N1723-92690	WARNING,SCATTERINGS	1	1						

Fig.38. TOOLS & ACCESSORIES

(A)=YSR7H-T
(B)=YSR7H-TS
(C)=

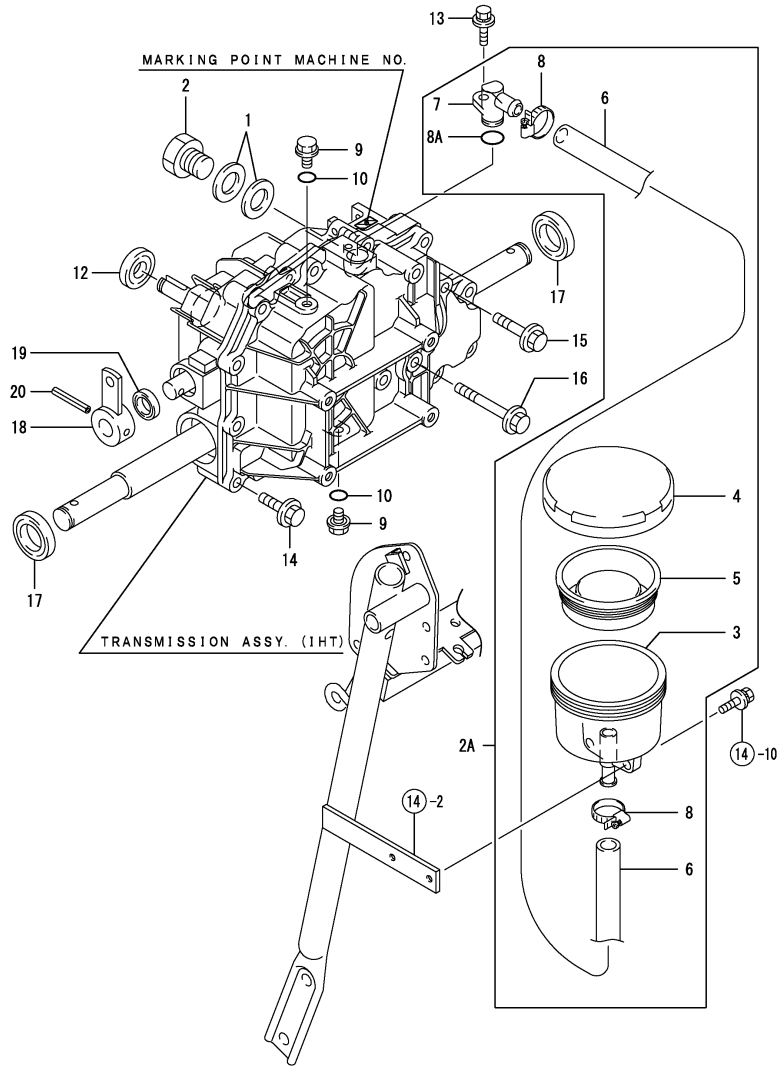
(D)=
(E)=
(F)=

No.	Lev.	Parts No.	Description	Qty						I	R
				(A)	(B)	(C)	(D)	(E)	(F)		
1	1	28160-100120	WRENCH, 10X12	1	1						
2	1	1N3021-38101	PIN,AXLE	2	2						
3	1	1F1150-92000	BAG,TOOL	1	1						
4	1	1N3360-96100	MANUAL	1	1						
5	1	22417-200120	COTTER PIN 2.0X12	2	2						
6	1	26116-060202	BOLT, M6X 20 PLATED	10	10						1
7	1	26347-060002	NUT, M6	10	10						1



Remarks
(1) IT IS A SPARE PART FOR SAFETY BOLT, GROUP NO.35, REF. NO.7.

Fig.39. TRANSMISSION



(A)=YSR7H-T
(B)=YSR7H-TS
(C)=

(D)=
(E)=
(F)=

No.	Lev.	Parts No.	Description	Q'ty						I	R
				(A)	(B)	(C)	(D)	(E)	(F)		
1	1	23414-200026	GASKET, 20X1.0	2	2						
2	1	23887-200002	PLUG, 20	1	1						
2A	1	1N3021-23040	SUB TANK KIT	1	1						
3	2	1N3021-23051	SUB TANK	1	1						
4	2	1N3021-23060	CAP, SUB-TANK	1	1						
5	2	1N3021-23070	DIAPHRAGM,SUB-TANK	1	1						
6	2	1N3021-23100	OIL HOSE	1	1						
7	2	194856-24920	BEND, SUCTION	1	1						
8	2	194856-24970	CLAMP, HOSE 25	2	2						
8A	2	24311-000140	O-RING, 1AP14.0	1	1						
9	1	23491-080002	PLUG, 8	2	2						
10	1	24311-000090	O-RING, 1AP9.0	2	2						
12	1	24421-153507	SEAL, OIL TC153507	1	1						
13	1	26018-060162	BOLT, M6X 16	1	1						
14	1	26476-080302	SCREW, TAPPING M8X30	14	14						
15	1	26476-080402	SCREW, TAPPING M8X40	1	1						
16	1	26476-080652	SCREW, TAPPING M8X65	3	3						
17	1	24421-254208	SEAL, OIL TC254208	2	2						
18	1	1N3021-26050	LEVER ASSY, CONTROL	1	1						
19	1	194065-27270	SEAL, OIL TC16266	1	1						
20	1	22351-060040	PIN, SPRING 6.0X40	1	1						

Remarks

NOTE: A MACHINE IN WHICH THE TRANSMISSION UNIT IS PUT INTO EFFECT BEARS THE STAMPED NUMBER TO INDICATE THIS GROUP NO.

*P/#7N3021-20030, TRANSMISSION (IHT)

ASSY.:
(PARTS OTHER THAN THOSE ILLUSTRATED CAN NOT BE DISASSEMBLED.)

Parts No. Index

Parts No.	Fig. No.	Ref. No.
104200-59170	1	10
106990-44660	6	24
114250-14400	5	11
114250-45310	6	1
114252-13800	4	15
114252-13910	4	16
114252-13960	4	17
114270-01600	1	8
114299-01760	1	23
114299-01950	1	25
114770-61600	8	11
119520-03990	6	27
160110-92710	3	10
160120-76940	8	9
160120-92700	3	9
160310-14550	5	37
160310-56980	7	38
160310-56990	7	37
160341-01950	10	1
160393-55050	6	11
160490-14200	5	10
160520-66291	8	19
160590-56530	7	9
160590-56671	7	23
160590-56800	7	32
160593-56540	7	28
160610-01690	1	9
160610-03050	2	1
160610-04201	2	4
160610-04570	4	1
160610-04910	5	13
160610-55100	6	12
160610-56151	4	6
	7	1
		2
160610-56610	7	21
160610-56630	7	16
160610-56900	7	34
160611-04350	9	18
160664-66220	8	21
160667-56750	7	29
160670-66350	8	22
160690-01600	1	18
160690-02220	1	11
		19
160690-07260	3	5
160690-07400	3	7
160690-11010	2	5
160690-11100	2	10
160690-11110	2	11

Parts No.	Fig. No.	Ref. No.
160690-11120	2	12
160690-11180	2	13
160690-11221	2	15
160690-11271	2	16
160690-11280	2	17
160690-11290	2	18
160690-11300	2	20
160690-11311	2	21
160690-13200	4	9
160690-13550	4	10
160690-13700	4	22
160690-13900	4	18
160690-13911	4	23
160690-14051	5	1
160690-14571	5	9
160690-21201	5	17
160690-22300	5	28
160690-55140	6	15
160690-55462	6	14
160690-56160	7	3
160690-56560	7	7
160690-56570	7	8
160690-61301	8	2
160690-61311	8	3
160690-61450	8	4
160690-61600	8	5
160690-66011	8	12
160690-66180	8	26
160690-66200	8	29
160690-66210	8	30
160690-76561	9	31
160690-76591	9	38
160690-78230	9	12
160690-78533	9	4
		10
160691-77020	10	2
160691-77310	10	17
160691-78171	9	9
160692-55330	6	16
160692-56560	7	39
160692-56700	7	36
160692-56710	7	11
160692-56770	7	31
160692-56800	7	35
160692-66063	8	14
160693-78511	9	3
160698-12510	4	2
160698-12540	4	4
160698-13560	4	13
160698-45110	9	45

Parts No.	Fig. No.	Ref. No.
160698-45120	9	19
160698-45210	9	20
160698-56520	7	6
160698-56650	7	18
160698-59351	6	25
160698-66100	8	13
160698-66110	8	15
160698-66140	8	16
160698-76060	9	25
160698-76260	9	26
160698-76510	9	27
160698-76520	9	28
160698-76530	9	29
160698-76540	9	30
160698-76560	9	32
160698-76570	9	33
160698-76580	9	34
160698-76660	9	36
160698-76670	9	37
160698-78503	9	8
160698-78512	9	7
160699-01331	2	3
160699-11200	2	14
160699-13500	4	12
160699-13620	4	11
160699-21220	5	18
160699-21850	5	33
160699-22010	5	22
160699-28010	5	34
160699-45010	9	1
160699-45200	9	23
160699-56090	7	5
160699-56550	7	17
160699-56580	7	26
160699-56600	7	22
160699-77990	10	19
160700-78040	9	41
160700-78050	9	42
160700-78720	9	43
160702-56720	7	30
160708-76900	9	46
160708-92610	3	8
160710-55061	6	4
160710-55360	6	19
160710-55370	6	20
160710-55382	6	21
160710-56740	7	10
160710-78710	6	28
	9	13
160715-77522	10	26

Parts No.	Fig. No.	Ref. No.
160725-77380	10	18
160762-55150	6	13
160763-12600	4	5
160769-56620	7	15
160769-56660	7	24
160792-59361	6	26 -1
160793-78010	9	40
160793-78630	9	11
160797-77270	29	12
160798-07100	3	3
160798-78620	9	5
160810-56550	7	25
160810-56580	7	19
160810-56590	7	20
160820-59391	6	26
160891-12530	4	3
160891-56900	7	4
160891-78200	10	20
160903-55390	6	22
160991-03180	2	2
160991-07260	3	6
160998-77530	10	26 -2
181230-56380	7	12
		33
183232-77521	10	26 -1
194065-27270	39	19
194080-58820	11	9
194273-47910	11	22
194856-24920	39	7
194856-24970	39	8
1A1040-58160	23	10
1A1140-58050	21	5
1A1470-40900	28	3
1C1011-45020	17	21
1C6320-64680	18	6
	21	7
1C6560-92610	20	3
1E1061-86610	36	3
1E4760-43090	19	7
		8
	23	9
1E6102-84960	29	8
1E6102-84970	17	8
	28	2
	29	9
1E6570-64760	18	7
1E6680-64240	21	6
1E6740-64200	19	10
1E7030-51301	12	10
1E7030-51301-1	12	10 -1

Parts No. Index

Parts No.	Fig. No.	Ref. No.
1F1150-92000	38	3
1J3999-02010	11	8
	20	1
1J3999-02160	33	1
1J3999-06000	17	13
1J3999-07000	17	1
	21	1
1N1570-32950	19	6
1N1570-38200	32	1
1N1570-38210	31	1
1N1570-51130	11	23
1N1570-73150	33	12
1N1570-74050	34	7
1N1570-74101	34	8
1N1570-74101-1	34	8 -1
1N1570-74110	34	9
1N1570-74110-1	34	9 -1
1N1570-74120	34	10
1N1570-74130	34	11
1N1570-74130-1	34	11 -1
1N1570-74140	34	12
1N1710-32600	11	30
	17	7
1N1710-51350	27	8
1N1710-71062	31	3
1N1710-71071	31	4
1N1710-71072	31	4 -1
1N1710-74002	34	1
1N1710-74002-1	34	1 -1
1N1710-74012	34	4
1N1710-74012-1	34	4 -1
1N1710-74021	34	6
1N1710-82140	14	5
1N1711-32790	22	1
1N1711-35520	22	11
1N1711-51390	30	1
1N1711-51850	30	2
1N1711-51860	30	3
1N1711-68190	36	1
1N1711-68220	36	2
1N1711-73170	33	21
1N1711-73240	33	4
1N1711-73280	33	5
1N1711-74000	34	2
1N1711-74010	34	5
1N1711-76001	35	12
1N1711-76001-1	35	12 -1
1N1713-00040	11	1
1N1713-00040-1	11	1 -1
1N1713-00080	11	2

Parts No.	Fig. No.	Ref. No.
1N1713-00080-1	11	2 -1
1N1713-00170	11	4
1N1720-74000	34	3
1N1723-32350	18	5
	21	2
1N1723-92530	36	13
1N1723-92670	37	4
1N1723-92680	37	5
1N1723-92690	37	6
1N1960-73502	33	6
1N3020-71320	32	20
1N3021-00250	11	6
1N3021-11260	12	5
1N3021-12020	13	4
1N3021-12020-1	13	4 -1
1N3021-12300	13	5
1N3021-12300-1	13	5 -1
1N3021-23040	39	2 A
1N3021-23051	39	3
1N3021-23060	39	4
1N3021-23070	39	5
1N3021-23100	39	6
1N3021-26050	39	18
1N3021-31451	17	16
1N3021-31480	17	17
1N3021-31580	12	9
	17	19
1N3021-32381	19	5
1N3021-32381-1	19	5 -1
1N3021-33601	20	2
1N3021-34390	22	3
1N3021-34710	22	9
1N3021-34720	22	10
1N3021-36130	24	3
1N3021-36401	24	7
1N3021-36401-1	24	7 -1
1N3021-37150	25	3
1N3021-37150-1	25	3 -1
1N3021-38101	26	3
	38	2
1N3021-38150	26	4
1N3021-38170	26	5
1N3021-38500	26	8
1N3021-38500-1	26	8 -1
1N3021-38600	26	9
1N3021-38600-1	26	9 -1
1N3021-51550	29	5
1N3021-51560	29	6
1N3021-52300	29	11
1N3021-73201	33	3

Parts No.	Fig. No.	Ref. No.
1N3021-91090	36	14
1N3021-91100	36	6
1N3021-91110	36	7
1N3021-91250	36	8
1N3260-73250	22	12
1N3300-02100	11	20
1N3300-02150	11	21
1N3300-11260	12	6
1N3300-12010	13	10
1N3300-12010-1	13	10 -1
1N3300-25100	26	2
1N3300-30000-1	14	1
1N3300-30000-2	14	1 -1
1N3300-31002	16	1 -2
1N3300-31050	16	2
1N3300-31051	16	2 -1
1N3300-31051-1	16	2 -2
1N3300-31300	17	3
1N3300-31400	17	15
1N3300-31450	17	4
1N3300-31500	17	18
1N3300-31651	17	6
1N3300-31700	17	20
1N3300-31700-1	17	20 -1
1N3300-34201	21	4
1N3300-34503	22	5
1N3300-34503-1	22	5 -1
1N3300-51010	27	1
1N3300-51400	28	1
1N3300-51451	28	4
1N3300-51451-1	28	4 -1
1N3300-51551	29	10
1N3300-51552-1	29	10 -1
1N3300-71320	32	15
1N3300-71330	32	14
1N3300-71401	31	5
1N3300-71401-1	31	5 -1
1N3300-73201	33	13
1N3300-73202-1	33	13 -1
1N3310-71200	32	2
1N3310-71301	32	13
1N3310-71301-1	32	13 -1
1N3330-00100	11	3
1N3330-00100-1	11	3 -1
1N3330-11250	12	4
1N3330-12300	13	12
1N3330-31000	16	1
1N3330-31001	16	1 -1
1N3330-31200	17	2
1N3330-31350	17	14

Parts No.	Fig. No.	Ref. No.
1N3330-32090	18	3
1N3330-32100	18	11
1N3330-32101	18	11 -1
1N3330-34000	21	3
1N3330-34350	22	2
1N3330-34450	22	4
1N3330-34450-1	22	4 -1
1N3330-34600	22	6
1N3330-34650	22	7
1N3330-34651	22	7 -1
1N3330-34700	22	8
1N3330-35000	23	1
1N3330-35200	23	5
1N3330-35400	23	7
1N3330-38500	26	19
1N3330-38500-1	26	19 -1
1N3330-51450	29	2
1N3330-51460	29	3
1N3330-71400-1	31	14
1N3330-73300	33	15
1N3330-73350	33	16
1N3330-75000	35	1
1N3330-75000-1	35	1 -1
1N3330-75100	35	2
1N3330-75100-1	35	2 -1
1N3330-75200	35	3
1N3330-75200-1	35	3 -1
1N3330-91400	36	11
1N3330-91410	36	12
1N3331-34050	21	6 -1
1N3335-11000	12	1
1N3335-11000-1	12	1 -1
1N3335-11080	12	2
1N3335-11100	12	3
1N3335-11100-1	12	3 -1
1N3335-11300	12	7
1N3335-11300-1	12	7 -1
1N3335-11400	12	8
1N3335-11400-1	12	8 -1
1N3335-12000	13	1
1N3335-12000-1	13	1 -1
1N3335-12101	13	2
1N3335-12101-1	13	2 -1
1N3335-12200	13	11
1N3335-12200-1	13	11 -1
1N3335-31600	17	5
1N3335-32050	18	2
1N3335-32090	18	4
1N3335-32090-1	18	4 -1
1N3335-32200	19	1

Parts No. Index

Parts No.	Fig. No.	Ref. No.
1N3335-32300	19	3
1N3335-32300-1	19	3 -1
1N3335-32350	19	4
1N3335-36100	24	2
1N3335-36100-1	24	2 -1
1N3360-00200	11	5
1N3360-00200-1	11	5 -1
1N3360-30100	14	2
1N3360-30101	14	2 -1
1N3360-30101-1	14	2 -2
1N3360-30300	14	3
1N3360-30350	14	4
1N3360-32000	18	1
1N3360-32200	19	2
1N3360-32400	18	12
1N3360-32400-1	18	12 -1
1N3360-35100	23	2
1N3360-35150	23	3
1N3360-35160	23	4
1N3360-35300	23	6
1N3360-35500	23	8
1N3360-36000	24	1
1N3360-36000-1	24	1 -1
1N3360-36200	24	4
1N3360-36200-1	24	4 -1
1N3360-36600	24	11
1N3360-36600-1	24	11 -1
1N3360-36650	24	12
1N3360-36650-1	24	12 -1
1N3360-38000	26	1
1N3360-38200	26	6
1N3360-38200-1	26	6 -1
1N3360-38250	26	7
1N3360-38250-1	26	7 -1
1N3360-51100	27	2
1N3360-51150	27	3
1N3360-51150-1	27	3 -1
1N3360-51170	27	4
1N3360-51200	27	5
1N3360-51210	27	6
1N3360-51300	27	7
1N3360-51350	27	9
1N3360-51410	29	1
1N3360-51500	27	10
1N3360-51500-1	27	10 -1
1N3360-71000	31	2
1N3360-71500	32	7
1N3360-71500-1	32	7 -1
1N3360-71550	32	8
1N3360-71560	32	9

Parts No.	Fig. No.	Ref. No.
1N3360-91050	36	4
1N3360-91070	37	1
1N3360-91080	36	5
1N3360-91300	36	9
1N3360-91320	36	10
1N3360-96100	38	4
1N3390-02100-1	11	20 -1
1S6240-61430	19	9
1S9050-01430	11	7
1W4909-92310	37	2
1W4909-92360	37	3
22117-060000	11	24
	17	9
		22
		23
		24
	21	8
22117-080000	14	6
	17	25
22117-100000	17	10
22137-060000	12	11
	22	13
	24	13
	32	16
	33	7
22137-080000	11	17
		25
	16	3
	20	4
	23	11
	31	6
		15
	33	17
22137-100000	12	12
	19	11
	23	12
22137-200000	26	10
22157-060000	12	13
	27	11
	33	8
22157-080000	13	13
	23	13
	24	8
	26	11
	32	17
	35	4
22157-100000	23	14
		15
22190-120000	11	10
22217-060000	11	11

Parts No.	Fig. No.	Ref. No.
22217-080000	11	18
	13	14
	26	12
	35	5
22217-100000	14	7
22242-000100	12	14
22242-000150	12	15
	13	6
22252-000160	5	29
22272-000050	11	26
22292-000100	19	12
22292-000200	26	13
22351-040008	5	19
		36
22351-050020	17	26
22351-060020	33	18
22351-060040	39	20
22372-040000	22	14
22372-080000	8	10
22417-160100	12	16
		17
	17	27
		28
22417-200100	11	27
	17	11
	21	9
	22	15
22417-200120	26	14
	33	9
	38	5
22417-200160	17	29
	22	16
22417-300200	23	16
22512-040120	5	12
		20
22512-040160	5	21
22512-050300	5	38
	13	15
	34	13
	35	6
		13
22550-050201	13	7
23414-200026	39	1
23491-080002	39	9
23887-200002	39	2
24101-060044	34	14
24101-062004	1	13
		21
24101-062050	1	12
		20

Parts No.	Fig. No.	Ref. No.
24104-060044	26	15
24104-062034	31	7
	32	4
24107-060044	34	15
24107-062024	34	16
24311-000090	39	10
24311-000140	39	8 A
24421-153507	39	12
24421-203508	34	17
24421-254208	39	17
24550-012060	19	13
24550-012150	17	12
24550-014100	18	8
24550-020100	26	16
25122-002701	13	8
26016-060124	26	17
26016-060202	34	18
26016-060204	11	12
26016-080164	14	8
	17	30
	18	13
		14
	27	13
	32	5
26016-080202	24	9
	26	20
26016-100202	14	9 -1
26016-100252	14	9
	23	17
26018-060124	11	13
	15	2
	19	14
	22	18
	25	2
		4
	32	6
		10
		11
26018-060162	18	15
	39	13
26018-060164	13	9
26018-060202	14	10
26018-080162	12	18
		19
	13	3
		16
	31	13
26018-080164	11	14
	16	4
	22	17

Parts No. Index

Parts No.	Fig. No.	Ref. No.	
26018-080164	24	5	
	28	5	
	29	13	
26018-080202	23	18	
	24	10	
26018-080204	24	6	
26023-040102	10	21	
26051-060002	12	20	
	24	14	
	27	14	
	31	8	
	32	18	
	33	10	
		14	
	26051-080002	16	5
		18	9
		19	15
		16	
		17	
23		19	
		20	
28		6	
30		4	
31		9	
	10		
	32	19	
	33	19	
26106-060082	4	7	
		14	
		19	
	24		
	9	39	
26106-060102	6	23	
	10	22	
	23		
26106-060202	2	22	
	10	27	
26106-060302	5	32	
26106-060352	2	23	
26106-080142	4	20	
26106-080202	5	39	
26106-080252	10	24	
26116-060202	35	7	
	38	6	
26116-060304	12	21	
26116-060502	11	15	
26116-060552	11	16	
26116-080162	35	8	
26116-080202	23	21	
	35	14	

Parts No.	Fig. No.	Ref. No.	
26116-080252	13	17	
	26	18	
	35	9	
26116-080352	11	19	
26117-040088	7	27	
26117-040257	8	20	
26117-060122	31	11	
26117-060162	24	15	
26117-060252	24	16	
26117-060304	20	5	
26117-080162	30	5	
	33	20	
26117-080202	31	12	
26117-080252	20	6	
26117-080254	16	6	
26156-160352	23	22	
26216-080182	2	19	
26347-060002	8	23	
	17	31	
	20	7	
	24	17	
	27	12	
	33	11	
	35	10	
	38	7	
	26347-080002	11	28
		16	7
	20	8	
	9		
	23	23	
26357-140002	18	10	
	21	10	
26366-060002	4	8	
	8	28	
26366-080002	4	21	
26476-060142	8	25	
	9	14	
		21	
		22	
		24	
26476-060252	1	22	
	9	15	
26476-060302	9	16	
26476-080302	39	14	
26476-080402	39	15	
26476-080652	39	16	
26717-060002	11	31	
	32	12	
26717-080002	11	29	
	19	18	

Parts No.	Fig. No.	Ref. No.
26717-080002	19	19
	23	25
	35	11
		15
26717-100002	14	11
	23	24
26737-140002	18	10 -1
26757-060002	8	24
28110-100120	3	11
28160-100120	38	1
29311-122000	10	25
29411-050000	29	4
29411-200000	29	7
29610-000650	9	17
29610-000950	9	44
760690-23700	5	30
760690-55710	6	2
760699-01502	1	14
760699-01561	1	2
760699-01571	1	1
760699-21700	5	14
760699-22500	5	24
7N3300-73000	33	2
7N3310-71250	32	3
7N3360-30290	15	1
7N3360-30291	15	1 -1
7N3360-37000	25	1
7N3360-37000-1	25	1 -1
X131009601X	10	3
X132009202X	10	10
X133004703X	10	4
X133104900X	10	6
X136105701X	10	15
X224023400X	10	5
X224211001X	10	13
X266008300X	10	8
X266008503X	10	7
X366102100X	10	16
X503106201X	10	12
X520003100X	10	9
X8167050951	10	14
X8580151002	10	11

Parts No.	Fig. No.	Ref. No.
-----------	----------	----------